

35-1168: Polyclonal Antibody to SEK1/MKK4 (Phospho-Ser80)

Clonality :	Polyclonal
Application :	WB,IHC,IF
Reactivity :	Human,Mouse,Rat
Gene :	MAP2K4
Gene ID :	6416
Uniprot ID :	P45985
Format :	Purified
Alternative Name :	JNKK, JNKK1, MAP2K4, MAPK/ERK kinase 4, MAPKK 4
Isotype :	Rabbit IgG
Immunogen Information :	Peptide sequence around phosphorylation site of serine 80 (T-H-S(p)-I-E) derived from Human SEK1/MKK4.

Description

Dual specificity kinase that activates the JUN kinases MAPK8 (JNK1) and MAPK9 (JNK2) as well as MAPK14 (p38) but not MAPK1 (ERK2) or MAPK3 (ERK1).

Product Info

Amount :	50 µl / 100 µl
Content :	Supplied at 1.0mg/mL in phosphate buffered saline (without Mg ²⁺ and Ca ²⁺), pH 7.4, 150mM NaCl, 0.02% sodium azide and 50% glycerol.
Storage condition :	Store the antibody at 4°C, stable for 6 months. For long-term storage, store at -20°C. Avoid repeated freeze and thaw cycles.

Application Note

Predicted MW: 44kd, Western blotting: 1:500~1:1000, Immunohistochemistry: 1:50~1:100, Immunofluorescence: 1:100~1:200

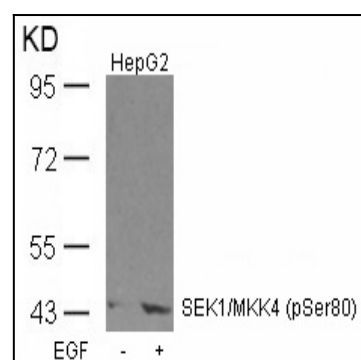


Figure 1: Western blot analysis of extracts from HepG2 cells untreated or treated with EGF using SEK1/MKK4(Phospho-Ser80) Antibody 35-1168 .

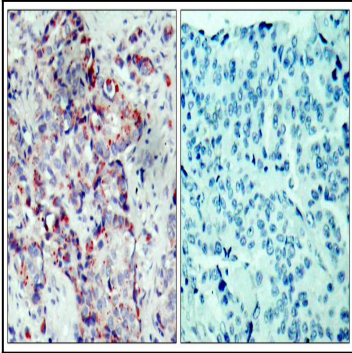


Figure 2: Immunohistochemical analysis of paraffin-embedded human breast carcinoma tissue using SEK1/MKK4(Phospho-Ser80) Antibody 35-1168 (left) or the same antibody preincubated with blocking peptide(right).

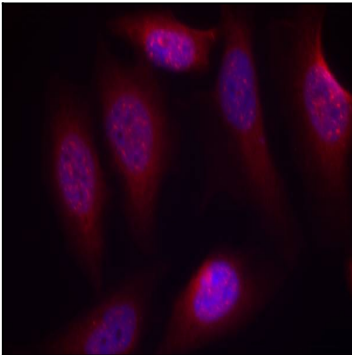


Figure 3: Immunofluorescence staining of methanol-fixed HeLa cells using SEK1/MKK4(Phospho-Ser80) Antibody 35-1168 .