

### 35-1171: Polyclonal Antibody to 14-3-3 zeta (Phospho-Ser58)

<b>Clonality :</b>	Polyclonal
<b>Application :</b>	WB,IHC,IF
<b>Reactivity :</b>	Human,Mouse,Rat
<b>Gene :</b>	YWHAZ
<b>Gene ID :</b>	7534
<b>Uniprot ID :</b>	P63104
<b>Format :</b>	Purified
<b>Alternative Name :</b>	1433Z, 143Z, FAS, Factor activating exoenzyme S, KCIP-1
<b>Isotype :</b>	Rabbit IgG
<b>Immunogen Information :</b>	Peptide sequence around phosphorylation site of serine 58 (R-S-S(p)-W-R) derived from Human 14-3-3 zeta.

#### Description

This gene product belongs to the 14-3-3 family of proteins which mediate signal transduction by binding to phosphoserine-containing proteins. This highly conserved protein family is found in both plants and mammals, and this protein is 99% identical to the mouse, rat and sheep orthologs. The encoded protein interacts with IRS1 protein, suggesting a role in regulating insulin sensitivity. Several transcript variants that differ in the 5' UTR but that encode the same protein have been identified for this gene.

#### Product Info

<b>Amount :</b>	50 µl / 100 µl
<b>Content :</b>	Supplied at 1.0mg/mL in phosphate buffered saline (without Mg <sup>2+</sup> and Ca <sup>2+</sup> ), pH 7.4, 150mM NaCl, 0.02% sodium azide and 50% glycerol.
<b>Storage condition :</b>	Store the antibody at 4°C, stable for 6 months. For long-term storage, store at -20°C. Avoid repeated freeze and thaw cycles.

#### Application Note

Predicted MW: 28kd, Western blotting: 1:500~1:1000, Immunohistochemistry: 1:50~1:100, Immunofluorescence: 1:100~1:200

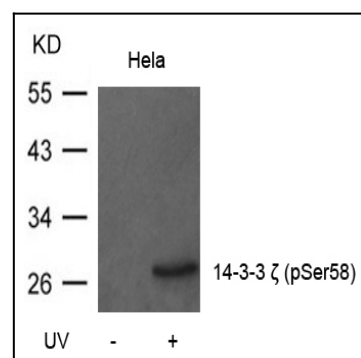


Figure 1: Western blot analysis of extracts from HeLa cells untreated or treated with UV using 14-3-3z(Phospho-Ser58) Antibody 35-1171 .

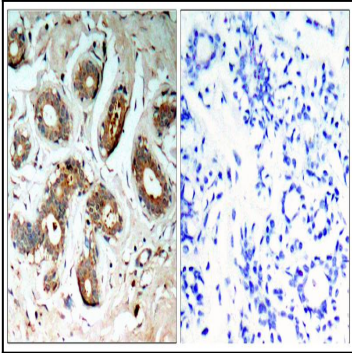


Figure 2: Immunohistochemical analysis of paraffin-embedded human breast carcinoma tissue using 14-3-3z(Phospho-Ser58) Antibody 35-1171 (left) or the same antibody preincubated with blocking peptide(right).

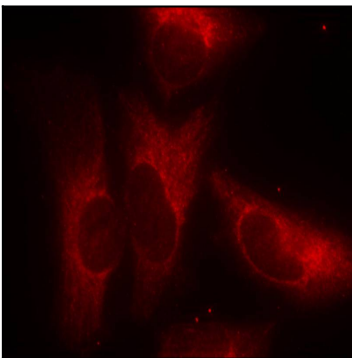


Figure 3: Immunofluorescence staining of methanol-fixed HeLa cells using 14-3-3z(Phospho-Ser58) Antibody 35-1171 .