

35-1179: Polyclonal Antibody to Ephrin-B2 (Phospho-Tyr330)

Clonality :	Polyclonal
Application :	WB
Reactivity :	Human,Mouse,Rat
Gene :	EFNB2
Gene ID :	1948
Uniprot ID :	P52799
Format :	Purified
Alternative Name :	HTKL, EPLG5, Htk-L, LERK5, MGC126226
Isotype :	Rabbit IgG
Immunogen Information :	Peptide sequence around phosphorylation site of tyrosine 330 (N-I-Y(p)-Y-K) derived from Human Ephrin-B2

Description

Adducins are a family of cytoskeleton proteins encoded by three genes (a, beta, gamma). Adducin is a heterodimeric protein that consists of related subunits, which are produced from distinct genes but share a similar structure. a- and beta-adducin include a protease-resistant N-terminal region and a protease-sensitive, hydrophilic C-terminal region. a- and gamma-adducins are ubiquitously expressed. In contrast, beta-adducin is expressed at high levels in brain and hematopoietic tissues. Adducin binds with high affinity to Ca(2+)/calmodulin and is a substrate for protein kinases A and C. Alternative splicing results in multiple variants encoding distinct isoforms; however, not all variants have been fully described.

Product Info

Amount :	50 µl / 100 µl
Content :	Supplied at 1.0mg/mL in phosphate buffered saline (without Mg2+ and Ca2+), pH 7.4, 150mM NaCl, 0.02% sodium azide and 50% glycerol.
Storage condition :	Store the antibody at 4°C, stable for 6 months. For long-term storage, store at -20°C. Avoid repeated freeze and thaw cycles.

Application Note

Predicted MW: 37kd, Western blotting: 1:500~1:1000

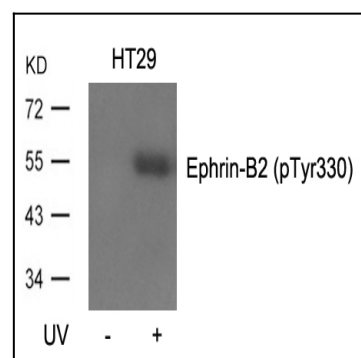


Figure 1: Western blot analysis of extracts from HT29 cells, untreated or treated with UV using Ephrin-B2(Phospho-Tyr330) Antibody 35-1179 .