

## 35-1191: Polyclonal Antibody to Raf1 (Phospho-Ser338)

<b>Clonality :</b>	Polyclonal
<b>Application :</b>	WB
<b>Reactivity :</b>	Human, Mouse, Rat
<b>Gene :</b>	RAF1
<b>Gene ID :</b>	5894
<b>Uniprot ID :</b>	P04049
<b>Format :</b>	Purified
<b>Alternative Name :</b>	C-RAF, C-Raf, CRAF
<b>Isotype :</b>	Rabbit IgG
<b>Immunogen Information :</b>	Peptide sequence around phosphorylation site of serine 338 (R-D-S(p)-S-Y) derived from Human RAF.

### Description

Involved in the transduction of mitogenic signals from the cell membrane to the nucleus. Part of the Ras-dependent signaling pathway from receptors to the nucleus. Protects cells from apoptosis mediated by STK3.

### Product Info

<b>Amount :</b>	50 µl / 100 µl
<b>Content :</b>	Supplied at 1.0mg/mL in phosphate buffered saline (without Mg <sup>2+</sup> and Ca <sup>2+</sup> ), pH 7.4, 150mM NaCl, 0.02% sodium azide and 50% glycerol.
<b>Storage condition :</b>	Store the antibody at 4°C, stable for 6 months. For long-term storage, store at -20°C. Avoid repeated freeze and thaw cycles.

### Application Note

Predicted MW: 73kd, Western blotting: 1:500~1:1000

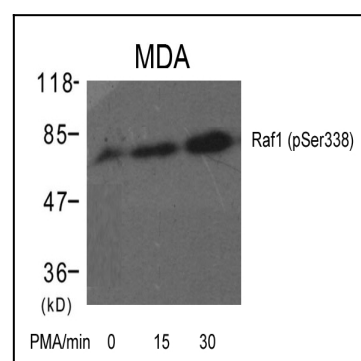


Figure 1: Western blot analysis of extracts from MDA cells untreated or treated with PMA for the indicated times using Raf1(Phospho-Ser338) Antibody 35-1191 .