

35-1204: Polyclonal Antibody to beta-Catenin (Phospho-Ser33)

| | |
|--------------------------------|--|
| Clonality : | Polyclonal |
| Application : | WB,IHC,IF |
| Reactivity : | Human,Mouse,Rat |
| Gene : | CTNNB1 |
| Gene ID : | 1499 |
| Uniprot ID : | P35222 |
| Format : | Purified |
| Alternative Name : | CTNNB1, CATNB, CTNB1, CTNNB |
| Isotype : | Rabbit IgG |
| Immunogen Information : | Peptide sequence around phosphorylation site of serine 33 (L-D-S(p)-G-I) derived from Human b-Catenin. |

Description

Involved in the regulation of cell adhesion and in signal transduction through the Wnt pathway.

Product Info

| | |
|----------------------------|--|
| Amount : | 50 µl / 100 µl |
| Content : | Supplied at 1.0mg/mL in phosphate buffered saline (without Mg ²⁺ and Ca ²⁺), pH 7.4, 150mM NaCl, 0.02% sodium azide and 50% glycerol. |
| Storage condition : | Store the antibody at 4°C, stable for 6 months. For long-term storage, store at -20°C. Avoid repeated freeze and thaw cycles. |

Application Note

Predicted MW: 92kd, Western blotting: 1:500~1:1000, Immunohistochemistry: 1:50~1:100

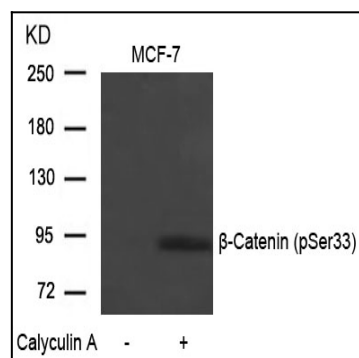


Figure 1: Western blot analysis of extracts from MCF-7 cells untreated or treated with Calyculin A using b-Catenin(Phospho-Ser33) Antibody 35-1204 .

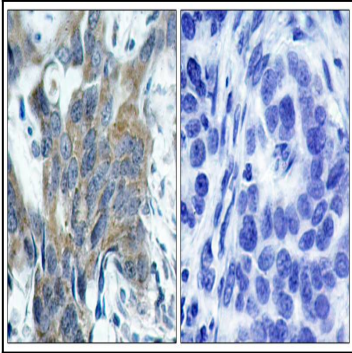


Figure 2: Immunohistochemical analysis of paraffin-embedded human breast carcinoma tissue using b-Catenin(Phospho-Ser33) Antibody 35-1204 (left) or the same antibody preincubated with blocking peptide(right).