

## 35-1208: Polyclonal Antibody to 4E-BP1(Phospho-Thr36)

<b>Clonality :</b>	Polyclonal
<b>Application :</b>	WB,IHC
<b>Reactivity :</b>	Human,Mouse,Rat
<b>Gene :</b>	EIF4EBP1
<b>Gene ID :</b>	1978
<b>Uniprot ID :</b>	Q13541
<b>Format :</b>	Purified
<b>Alternative Name :</b>	BP-1, 4EBP1, 4E-BP1, PHAS-I
<b>Isotype :</b>	Rabbit IgG
<b>Immunogen Information :</b>	Peptide sequence around phosphorylation site of threonine 36(S-T-T(p)-P-G) derived from Human 4E-BP1.

### Description

Regulates eIF4E activity by preventing its assembly into the eIF4F complex. Mediates the regulation of protein translation by hormones, growth factors and other stimuli that signal through the MAP kinase and mTORC1 pathways.

### Product Info

<b>Amount :</b>	50 µl / 100 µl
<b>Content :</b>	Supplied at 1.0mg/mL in phosphate buffered saline (without Mg <sup>2+</sup> and Ca <sup>2+</sup> ), pH 7.4, 150mM NaCl, 0.02% sodium azide and 50% glycerol.
<b>Storage condition :</b>	Store the antibody at 4°C, stable for 6 months. For long-term storage, store at -20°C. Avoid repeated freeze and thaw cycles.

### Application Note

Predicted MW: 18kd, , Western blotting: 1:500, Immunohistochemistry: 1:50~1:100

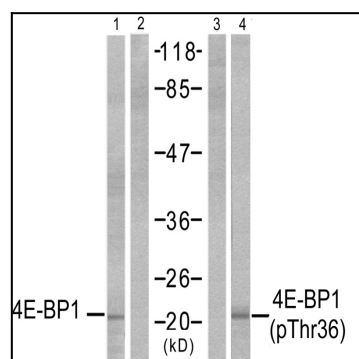


Figure 1: Western blot analysis of extracts from MDA-MB-435 cells, untreated or EGF-treated (200 ng/ml, 30min), using 4E-BP1 (Ab-36) antibody (35-1553 , Lane 1 and 2) and 4E-BP1 (phospho-Thr36) antibody (35-1208 , Lane 3 and 4).

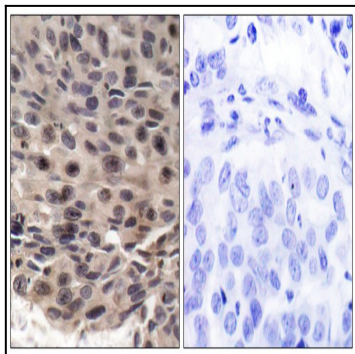


Figure 2: Immunohistochemical analysis of paraffin-embedded human breast carcinoma, using 4E-BP1 (phospho-Thr36) antibody (35-1208 ).