

## 35-1226: Polyclonal Antibody to CDC2 (Phospho-Tyr15)

<b>Clonality :</b>	Polyclonal
<b>Application :</b>	WB
<b>Reactivity :</b>	Human, Mouse, Rat
<b>Gene :</b>	CDK1
<b>Gene ID :</b>	983
<b>Uniprot ID :</b>	P06493
<b>Format :</b>	Purified
<b>Alternative Name :</b>	CDC28, CDC2A, CDK1, Cyclin-dependent kinase 1, Cell division control protein 2 homolog, p34 protein kinase
<b>Isotype :</b>	Rabbit IgG
<b>Immunogen Information :</b>	Peptide sequence around phosphorylation site of tyrosine 15 (G-T-Y(p)-G-V) derived from Human CDC2.

### Description

Plays a key role in the control of the eukaryotic cell cycle. It is required in higher cells for entry into S-phase and mitosis. p34 is a component of the kinase complex that phosphorylates the repetitive C-terminus of RNA polymerase II. Y Gu, et al. (1992) EMBO J. 11(11): 3995

### Product Info

<b>Amount :</b>	50 µl / 100 µl
<b>Content :</b>	Supplied at 1.0mg/mL in phosphate buffered saline (without Mg <sup>2+</sup> and Ca <sup>2+</sup> ), pH 7.4, 150mM NaCl, 0.02% sodium azide and 50% glycerol.
<b>Storage condition :</b>	Store the antibody at 4°C, stable for 6 months. For long-term storage, store at -20°C. Avoid repeated freeze and thaw cycles.

### Application Note

Predicted MW: 34kd, Western blotting: 1:500~1:1000

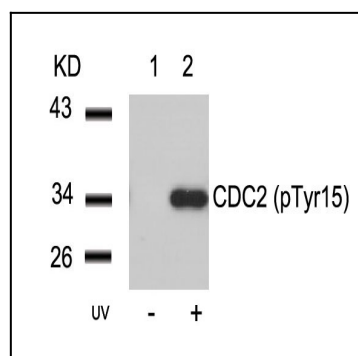


Figure 1: Western blot analysis of extracts from HeLa cells untreated (lane 1) or treated with UV (lane 2) using CDC2 (Phospho-Tyr15) Antibody 35-1226.

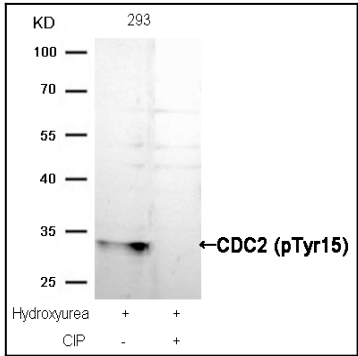


Figure 2: Western blot analysis of extracts from 293 cells, treated with Hydroxyurea or calf intestinal phosphatase (CIP), using CDC2 (Phospho-Tyr15) Antibody 35-1226 .

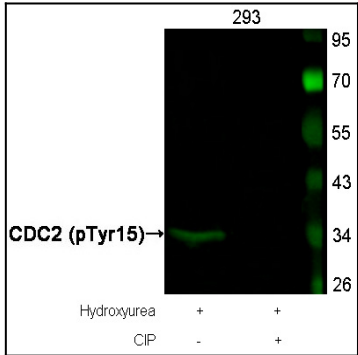


Figure 3: Western blot analysis of extracts from 293 cells, treated with Hydroxyurea or calf intestinal phosphatase (CIP), using CDC2 (Phospho-Tyr15) Antibody 35-1226 .