

35-1228: Polyclonal Antibody to p44/42 MAP Kinase (Phospho-Tyr204)

Clonality :	Polyclonal
Application :	WB,IHC,IF
Reactivity :	Human,Mouse,Rat
Gene :	MAPK3
Gene ID :	5595
Uniprot ID :	P27361
Format :	Purified
Alternative Name :	ERK1,ERT2,ERK-1,PRKM3,P44ERK1
Isotype :	Rabbit IgG
Immunogen Information :	Peptide sequence around phosphorylation site of tyrosine 204 (T-E-Y(p)-V-A) derived from Human p44/42 MAP Kinase.

Description

Involved in both the initiation and regulation of meiosis, mitosis, and postmitotic functions in differentiated cells by phosphorylating a number of transcription factors such as ELK-1. Phosphorylates EIF4EBP1; required for initiation of translation. Phosphorylates microtubule-associated protein 2 (MAP2). Phosphorylates SPZ1 TETE HANNKEN, et al. (2000) Am Soc Nephrol 11:1387-1397 Omar D. PerezNature et al. (2002) Biotechnology 20: 155 - 162 Jingui Yu, et al. (2005) Anesth Analg 101: 315-321 Hironobu Ihn et al.(2000) Immunology 165: 2149-2155

Product Info

Amount :	50 µl / 100 µl
Content :	Supplied at 1.0mg/mL in phosphate buffered saline (without Mg2+ and Ca2+), pH 7.4, 150mM NaCl, 0.02% sodium azide and 50% glycerol.
Storage condition :	Store the antibody at 4°C, stable for 6 months. For long-term storage, store at -20°C. Avoid repeated freeze and thaw cycles.

Application Note

Predicted MW: 42 44 kd, Western blotting: 1:500~1:1000, Immunohistochemistry: 1:50~1:100, Immunofluorescence: 1:100~1:200

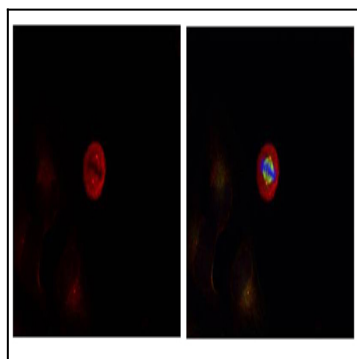


Figure 1: Immunofluorescence staining of methanol-fixed HeLa cells showing centrosome and nuclear staining using p44/42 MAP Kinase (Phospho-Tyr204) Antibody 35-1228 .

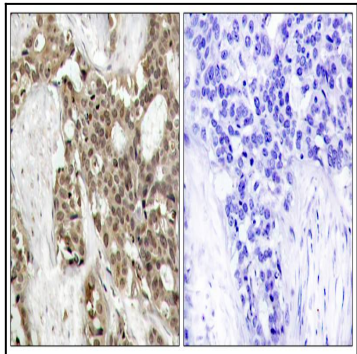


Figure 2: Immunohistochemical analysis of paraffin-embedded human breast carcinoma tissue using p44/42 MAP Kinase (Phospho-Tyr204) Antibody 35-1228 (left) or the same antibody preincubated with blocking peptide 51246 (right).

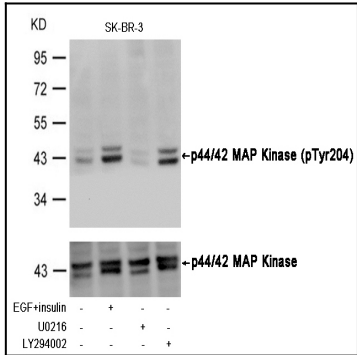


Figure 3: Western blot analysis of extracts from SK-BR-3 cells, treated with insulin and EGF, and pretreated with U0126 and LY294002 cells using p44/42 MAP Kinase (Phospho-Tyr204) Antibody 35-1228 .