

## 35-1239: Polyclonal Antibody to Connexin 43 (phospho-Ser367)

<b>Clonality :</b>	Polyclonal
<b>Application :</b>	WB,IHC
<b>Reactivity :</b>	Human,Mouse,Rat
<b>Gene :</b>	GJA1
<b>Gene ID :</b>	2697
<b>Uniprot ID :</b>	P17302
<b>Format :</b>	Purified
<b>Alternative Name :</b>	CX43, CXA1, CXN-43, GJA1
<b>Isotype :</b>	Rabbit IgG
<b>Immunogen Information :</b>	Peptide sequence around phosphorylation site of serine 368(R-A-S(p)-S-R) derived from Human Connexin 43.

### Description

One gap junction consists of a cluster of closely packed pairs of transmembrane channels, the connexons, through which materials of low MW diffuse from one cell to a neighboring cell. May play a critical role in the physiology of hearing by participating in the recycling of potassium to the cochlear endolymph. Joell L. Solan<sup>1</sup>, et al. (2003) Cell Science 116: 2203-2211 Satoshi Matsushita, et al. (2006) Histochemistry and Cytochemistry 54 (3): 343-353, Xiaoyong Bao, et al. (2004) Cell Physiol 286: C647-C654 W. E. I. Li, et al.(1998) European Journal of Neuroscience 10: 2444

### Product Info

<b>Amount :</b>	50 µl / 100 µl
<b>Content :</b>	Supplied at 1.0mg/mL in phosphate buffered saline (without Mg <sup>2+</sup> and Ca <sup>2+</sup> ), pH 7.4, 150mM NaCl, 0.02% sodium azide and 50% glycerol.
<b>Storage condition :</b>	Store the antibody at 4°C, stable for 6 months. For long-term storage, store at -20°C. Avoid repeated freeze and thaw cycles.

### Application Note

Predicted MW: 43kd, Western blotting: 1:500~1:1000, Immunohistochemistry: 1:50~1:100

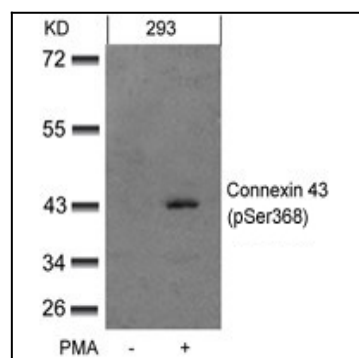


Figure 1: Western blot analysis of extracts from 293 cells untreated or treated with PMA using Connexin 43(phospho-Ser368) Antibody 35-1239 .

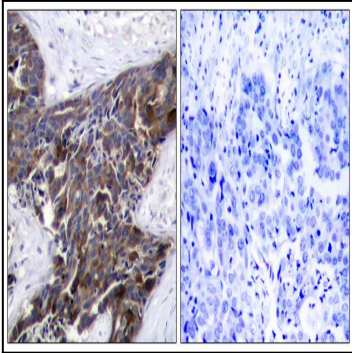


Figure 2: Immunohistochemical analysis of paraffin-embedded human breast carcinoma tissue using Connexin 43(Phospho-Ser367) Antibody 35-1239 (left) or the same antibody preincubated with blocking peptide(right).