

35-1241: Polyclonal Antibody to GluR1 (phospho-Ser849)

Clonality :	Polyclonal
Application :	WB
Reactivity :	Rat,Mouse,Human
Gene :	GRIA1
Gene ID :	2890
Uniprot ID :	P42261
Format :	Purified
Alternative Name :	GLR1, GLUH1, GRIA1, GluR-1, GluR-A
Isotype :	Rabbit IgG
Immunogen Information :	Peptide sequence around phosphorylation site of serine 849 (Q-Q-S(p)-I-N) derived from Human GluR1.

Description

Glutamate receptors are the predominant excitatory neurotransmitter receptors in the mammalian brain and are activated in a variety of normal neurophysiologic processes. These receptors are heteromeric protein complexes with multiple subunits, each possessing transmembrane regions, and all arranged to form a ligand-gated ion channel. The classification of glutamate receptors is based on their activation by different pharmacologic agonists. This gene belongs to a family of α -amino-3-hydroxy-5-methyl-4-isoxazole propionate (AMPA) receptors. Alternatively spliced transcript variants encoding different isoforms have been found for this gene.

Product Info

Amount :	50 μ l / 100 μ l
Content :	Supplied at 1.0mg/mL in phosphate buffered saline (without Mg ²⁺ and Ca ²⁺), pH 7.4, 150mM NaCl, 0.02% sodium azide and 50% glycerol.
Storage condition :	Store the antibody at 4°C, stable for 6 months. For long-term storage, store at -20°C. Avoid repeated freeze and thaw cycles.

Application Note

Predicted MW: 110kd, Western blotting: 1:500~1:1000

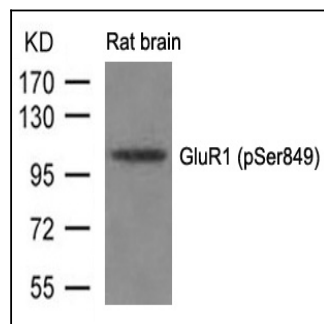


Figure 1: Western blot analysis of extracts from Rat brain tissue using GluR1(phospho-Ser849) Antibody 35-1241 .