

35-1245: Polyclonal Antibody to Merlin (Phospho-Ser518)

Clonality :	Polyclonal
Application :	WB,IF
Reactivity :	Human,Mouse,Rat
Gene :	NF2
Gene ID :	4771
Uniprot ID :	P35240
Format :	Purified
Alternative Name :	MERL, NF2, Neurofibromin 2, SCH, Schwannomerlin
Isotype :	Rabbit IgG
Immunogen Information :	Peptide sequence around phosphorylation site of serine 518 (R-L-S(p)-M-E) derived from Human Merlin.

Description

Probable regulator of the Hippo/SWH (Sav/Wts/Hpo) signaling pathway, a signaling pathway that plays a pivotal role in tumor suppression by restricting proliferation and promoting apoptosis. Along with WWC1 can synergistically induce the phosphorylation of LATS1 and LATS2 and can probably function in the regulation of the Hippo/SWH (Sav/Wts/Hpo) signaling pathway. May act as a membrane stabilizing protein. May inhibit PI3 kinase by binding to AGAP2 and impairing its stimulating activity. Guang-Hui Xiao, et al. (2005) Mol. Cell. Biol ; 25: 2384 - 2394. Hi-Su Yang, et al. (2006) Cancer Res ; 66: 2708 - 2715. R Bohni, et al. (1994) J. Biol. Chem ; 269: 14541 - 14545. Adam J. Ratner, et al. (2001) J. Biol. Chem ; 276: 19267 - 19275.

Product Info

Amount :	50 µl / 100 µl
Content :	Supplied at 1.0mg/mL in phosphate buffered saline (without Mg ²⁺ and Ca ²⁺), pH 7.4, 150mM NaCl, 0.02% sodium azide and 50% glycerol.
Storage condition :	Store the antibody at 4°C, stable for 6 months. For long-term storage, store at -20°C. Avoid repeated freeze and thaw cycles.

Application Note

Predicted MW: 69kd, Western blotting: 1:500~1:1000, Immunofluorescence: 1:100~1:200

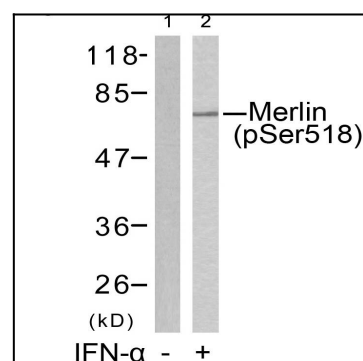


Figure 1: Western blot analysis of extracts from HUVEC cells untreated(lane 1) or treated with IFN-α(lane 2) using Merlin(Phospho-Ser518) Antibody 35-1245 .

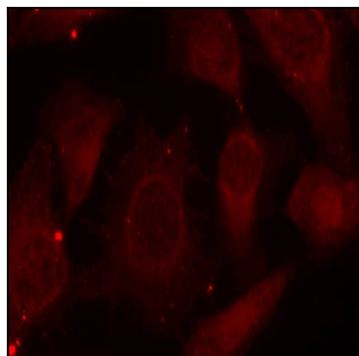


Figure 2: Immunofluorescence staining of methanol-fixed HeLa cells using Merlin(Phospho-Ser518) Antibody 35-1245 .

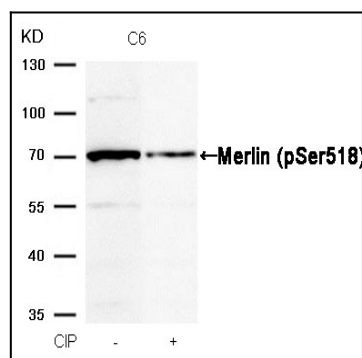


Figure 3: Western blot analysis of extracts from C6 cells, treated with calf intestinal phosphatase (CIP), using Merlin (Phospho-Ser518) Antibody 35-1245 .