

35-1246: Polyclonal Antibody to synapsin (Phospho-Ser9)

Clonality :	Polyclonal
Application :	WB,IF
Reactivity :	Rat,Mouse,Human
Gene :	SYN1
Gene ID :	6853
Uniprot ID :	P17600
Format :	Purified
Alternative Name :	Syn-1,synapsin I
Isotype :	Rabbit IgG
Immunogen Information :	Peptide sequence around phosphorylation site of serine 9 (R-L-S(p)-D-S) derived from Human SYN1/synapsin.

Description

Neuronal phosphoprotein that coats synaptic vesicles, binds to the cytoskeleton, and is believed to function in the regulation of neurotransmitter release. The complex formed with NOS1 and CAPON proteins is necessary for specific nitric-oxid functions at a presynaptic level

Product Info

Amount :	50 µl / 100 µl
Content :	Supplied at 1.0mg/mL in phosphate buffered saline (without Mg ²⁺ and Ca ²⁺), pH 7.4, 150mM NaCl, 0.02% sodium azide and 50% glycerol.
Storage condition :	Store the antibody at 4°C, stable for 6 months. For long-term storage, store at -20°C. Avoid repeated freeze and thaw cycles.

Application Note

Predicted MW: 77kd, Western blotting: 1:500~1:1000, Immunofluorescence: 1:100~1:200

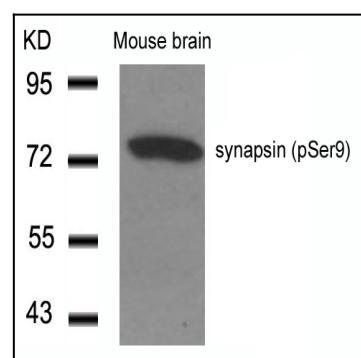


Figure 1: Western blot analysis of extracts from Mouse Brain tissue using synapsin(Phospho-Ser9) Antibody 35-1246 .

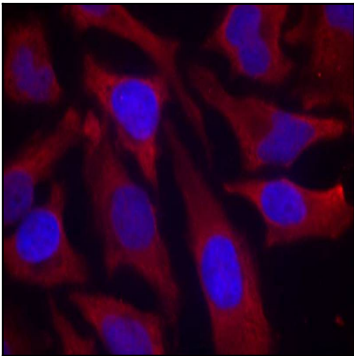


Figure 2: Immunofluorescence staining of methanol-fixed HeLa cells using synapsin(Phospho-Ser9) Antibody 35-1246 .