

35-1248: Polyclonal Antibody to p70 S6 Kinase (Phospho-Ser411)

Clonality :	Polyclonal
Application :	WB,IHC,IF
Reactivity :	Human,Mouse,Rat
Gene :	RPS6KB1
Gene ID :	6198
Uniprot ID :	P23443
Format :	Purified
Alternative Name :	KS6B1, P70-S6K, RPS6KB1, S6K
Isotype :	Rabbit IgG
Immunogen Information :	Peptide sequence around phosphorylation site of serine 411 (I-R-S(p)-P-R) derived from Human p70 S6 Kinase.

Description

Phosphorylates specifically ribosomal protein S6 in response to insulin or several classes of mitogens. Promotes protein synthesis by phosphorylating PD4 at 'Ser-67' and targeting it for degradation.

Product Info

Amount :	50 µl / 100 µl
Content :	Supplied at 1.0mg/mL in phosphate buffered saline (without Mg ²⁺ and Ca ²⁺), pH 7.4, 150mM NaCl, 0.02% sodium azide and 50% glycerol.
Storage condition :	Store the antibody at 4°C, stable for 6 months. For long-term storage, store at -20°C. Avoid repeated freeze and thaw cycles.

Application Note

Predicted MW: 70 85 kd, Western blotting: 1:500~1:1000, Immunohistochemistry: 1:50~1:100, Immunofluorescence: 1:100~1:200

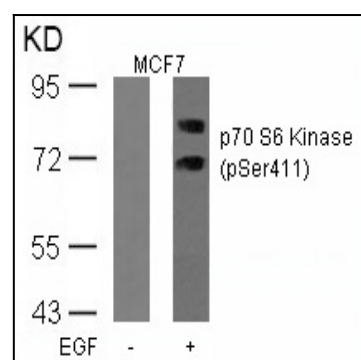


Figure 1: Western blot analysis of extracts from MCF cells untreated or treated with EGF using p70 S6 Kinase(Phospho-Ser411) Antibody 35-1248 .

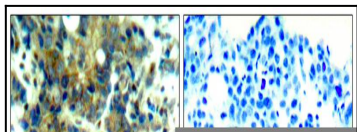


Figure 2: Immunohistochemical analysis of paraffin-embedded human breast carcinoma tissue using p70 S6 Kinase(Phospho-Ser411) Antibody 35-1248 (left) or the same antibody preincubated with blocking peptide(right).

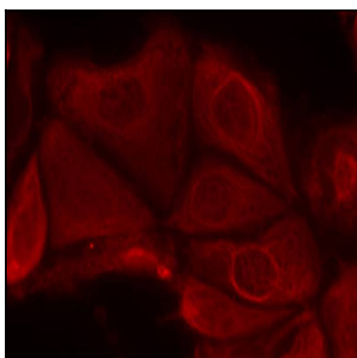


Figure 3: Immunofluorescence staining of methanol-fixed MCF7 cells using p70 S6 Kinase(Phospho-Ser411) Antibody 35-1248 .