

35-1263: Polyclonal Antibody to BIM (Phospho-Ser69)

Clonality :	Polyclonal
Application :	IHC,IF
Reactivity :	Human,Mouse,Rat
Gene :	BCL2L11
Gene ID :	10018
Uniprot ID :	O43521
Format :	Purified
Alternative Name :	BCL2-like protein 11, BCL2L11, BOD, Bcl-2 related ovarian death protein
Isotype :	Rabbit IgG
Immunogen Information :	Peptide sequence around phosphorylation site of serine 69 (P-A-S(p)-P-G) derived from Human BIM.

Description

Induces apoptosis. Isoform BimL is more potent than isoform BimEL. Isoform Bim-a1, isoform Bim-a2 and isoform Bim-a3 induce apoptosis, although less potent than the isoforms BimEL, BimL and BimS. Isoform Bim-gamma induces apoptosis

Product Info

Amount :	50 µl / 100 µl
Content :	Supplied at 1.0mg/mL in phosphate buffered saline (without Mg ²⁺ and Ca ²⁺), pH 7.4, 150mM NaCl, 0.02% sodium azide and 50% glycerol.
Storage condition :	Store the antibody at 4°C, stable for 6 months. For long-term storage, store at -20°C. Avoid repeated freeze and thaw cycles.

Application Note

Predicted MW: 23kd, Immunohistochemistry: 1:50~1:100, Immunofluorescence: 1:100~1:200

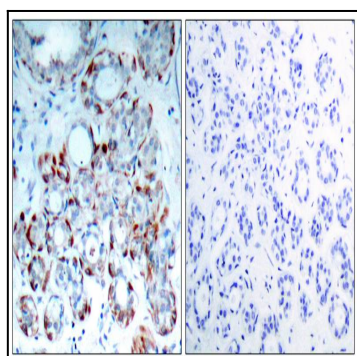


Figure 1: Immunohistochemical analysis of paraffin-embedded human breast carcinoma tissue using BIM(Phospho-Ser69) Antibody 35-1263 (left) or the same antibody preincubated with blocking peptide(right).

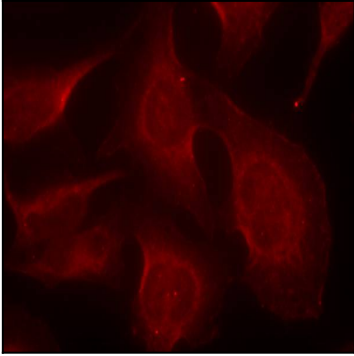


Figure 2: Immunofluorescence staining of methanol-fixed HeLa cells using BIM(Phospho-Ser69) Antibody 35-1263 .