

### 35-1265: Polyclonal Antibody to Gab1 (Phospho-Tyr627)

<b>Clonality :</b>	Polyclonal
<b>Application :</b>	WB,IF
<b>Reactivity :</b>	Human,Mouse
<b>Gene :</b>	GAB1
<b>Gene ID :</b>	2549
<b>Uniprot ID :</b>	Q13480
<b>Format :</b>	Purified
<b>Alternative Name :</b>	Growth factor receptor bound protein 2-associated protein 1
<b>Isotype :</b>	Rabbit IgG
<b>Immunogen Information :</b>	Peptide sequence around phosphorylation site of tyrosine 627 (V-E-Y(p)-L-D) derived from Human Gab1.

### Description

The protein encoded by Gab1 is a member of the IRS1-like multisubstrate docking protein family. It is an important mediator of branching tubulogenesis and plays a central role in cellular growth response, transformation and apoptosis. Two transcript variants encoding different isoforms have been found for this gene.

### Product Info

<b>Amount :</b>	50 µl / 100 µl
<b>Content :</b>	Supplied at 1.0mg/mL in phosphate buffered saline (without Mg <sup>2+</sup> and Ca <sup>2+</sup> ), pH 7.4, 150mM NaCl, 0.02% sodium azide and 50% glycerol.
<b>Storage condition :</b>	Store the antibody at 4°C, stable for 6 months. For long-term storage, store at -20°C. Avoid repeated freeze and thaw cycles.

### Application Note

Predicted MW: 110kd, Western blotting: 1:500~1:1000, Immunofluorescence: 1:100~1:200

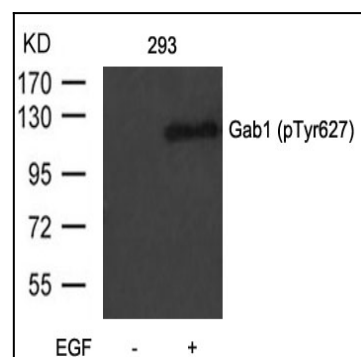


Figure 1: Western blot analysis of extracts from 293 cells untreated or treated with EGF using Gab1(Phospho-Tyr627) Antibody 35-1265 .

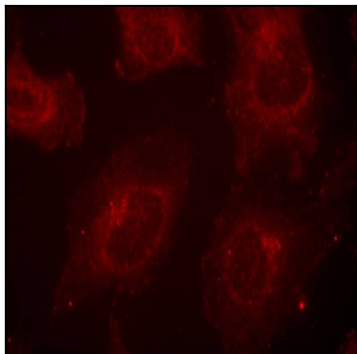


Figure 2: Immunofluorescence staining of methanol-fixed Hela cells using Gab1(Phospho-Tyr627) Antibody 35-1265 .