

35-1266: Polyclonal Antibody to GluR2 (phospho-Ser880)

Clonality :	Polyclonal
Application :	WB
Reactivity :	Rat,Mouse,Human
Gene :	GRIA2
Gene ID :	2891
Uniprot ID :	P42262
Format :	Purified
Alternative Name :	GRIA2, GluR-2, GluR-B, GluR-K2, AMPA 2
Isotype :	Rabbit IgG
Immunogen Information :	Peptide sequence around phosphorylation site of serine 880 (I-E-S(p)-V-K) derived from Human Glutamate receptor 2.

Description

Ionotropic glutamate receptor. L-glutamate acts as an excitatory neurotransmitter at many synapses in the central nervous system. Binding of the excitatory neurotransmitter L-glutamate induces a conformation change, leading to the opening of the cation channel, and thereby converts the chemical signal to an electrical impulse. The receptor then desensitizes rapidly and enters a transient inactive state, characterized by the presence of bound agonist.

Product Info

Amount :	50 µl / 100 µl
Content :	Supplied at 1.0mg/mL in phosphate buffered saline (without Mg ²⁺ and Ca ²⁺), pH 7.4, 150mM NaCl, 0.02% sodium azide and 50% glycerol.
Storage condition :	Store the antibody at 4°C, stable for 6 months. For long-term storage, store at -20°C. Avoid repeated freeze and thaw cycles.

Application Note

Predicted MW: 100kd, Western blotting: 1:500~1:1000

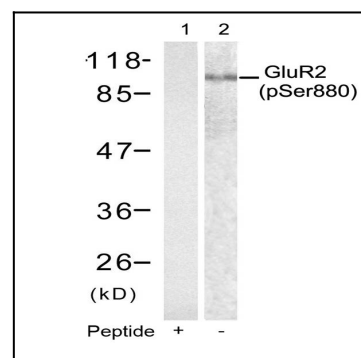


Figure 1: Western blot analysis of extracts from mouse brain tissue using Glutamate receptor 2(Precursor)(phospho-Ser880) Antibody 35-1266 (Lane 2) and the same antibody preincubated with blocking peptide(Lane1).