

35-1267: Polyclonal Antibody to MARCKS (Phospho-Ser158)

| | |
|--------------------------------|------------------------------------------------------------------------------------------------------|
| Clonality : | Polyclonal |
| Application : | WB,IF |
| Reactivity : | Human,Mouse,Rat |
| Gene : | MARCKS |
| Gene ID : | 4082 |
| Uniprot ID : | P29966 |
| Format : | Purified |
| Alternative Name : | MACS, MARCS, PKCSL, PRKCSL, Protein kinase C substrate |
| Isotype : | Rabbit IgG |
| Immunogen Information : | Peptide sequence around phosphorylation site of serine 158 (R-F-S(p)-F-K) derived from Human MARCKS. |

Description

MARCKS is the most prominent cellular substrate for protein kinase C. This protein binds calmodulin, actin, and synapsin. MARCKS is a filamentous (F) actin cross-linking protein.

Product Info

| | |
|----------------------------|--------------------------------------------------------------------------------------------------------------------------------------------------------------|
| Amount : | 50 µl / 100 µl |
| Content : | Supplied at 1.0mg/mL in phosphate buffered saline (without Mg ²⁺ and Ca ²⁺), pH 7.4, 150mM NaCl, 0.02% sodium azide and 50% glycerol. |
| Storage condition : | Store the antibody at 4°C, stable for 6 months. For long-term storage, store at -20°C. Avoid repeated freeze and thaw cycles. |

Application Note

Predicted MW: 80kd, Western blotting: 1:500~1:1000, Immunofluorescence: 1:100~1:200

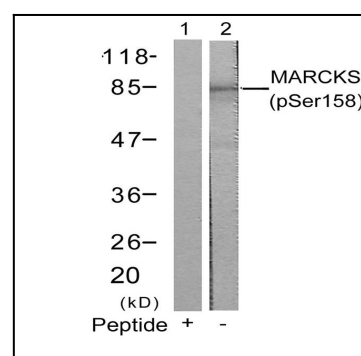


Figure 1: Western blot analysis of extracts from 3T3 cells using MARCKS(Phospho-Ser158) Antibody 35-1267 (Lane 2) and the same antibody preincubated with blocking peptide(Lane1).

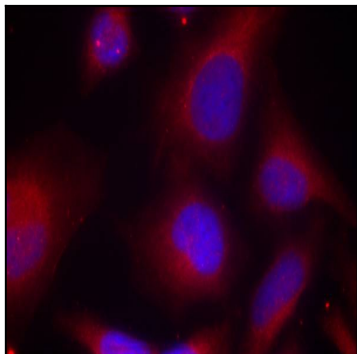


Figure 2: Immunofluorescence staining of methanol-fixed HeLa cells using MARCKS(Phospho-Ser158) Antibody 35-1267 .