

## 35-1273: Polyclonal Antibody to IGF-1R (Phospho-Tyr1280)

<b>Clonality :</b>	Polyclonal
<b>Application :</b>	WB
<b>Reactivity :</b>	Human
<b>Gene :</b>	IGF1R
<b>Gene ID :</b>	3480
<b>Uniprot ID :</b>	P08069
<b>Format :</b>	Purified
<b>Alternative Name :</b>	IGFR, CD221, IGFR
<b>Isotype :</b>	Rabbit IgG
<b>Immunogen Information :</b>	Peptide sequence around phosphorylation site of tyrosine 1280 (S-F-Y(p)-Y-S) derived from Human IGF-1R

### Description

This receptor binds insulin-like growth factor 1 (IGF1) with a high affinity and IGF2 with a lower affinity. It has a tyrosine-protein kinase activity, which is necessary for the activation of the IGF1-stimulated downstream signaling cascade. When present in a hybrid receptor with INSR, binds IGF1. Ref.19 shows that hybrid receptors composed of IGF1R and INSR isoform Long are activated with a high affinity by IGF1, with low affinity by IGF2 and not significantly activated by insulin, and that hybrid receptors composed of IGF1R and INSR isoform Short are activated by IGF1, IGF2 and insulin. In contrast, Ref.21 shows that hybrid receptors composed of IGF1R and INSR isoform Long and hybrid receptors composed of IGF1R and INSR isoform Short have similar binding characteristics, both bind IGF1 and have a low affinity for insulin. Adams, T.E. et al. (2000) Cell. Mol. Life Sci. 57, 1050-1093 Baserga, R. et al. (2000) Oncogene 19, 5574-5581 Scheidegger, K.J. et al. (2000) J. Biol. Chem. 275, 38921-38928. O'Connor R, et al. Mol Cell Biol 1997 Jan; 17(1): 427-35

### Product Info

<b>Amount :</b>	50 µl / 100 µl
<b>Content :</b>	Supplied at 1.0mg/mL in phosphate buffered saline (without Mg <sup>2+</sup> and Ca <sup>2+</sup> ), pH 7.4, 150mM NaCl, 0.02% sodium azide and 50% glycerol.
<b>Storage condition :</b>	Store the antibody at 4°C, stable for 6 months. For long-term storage, store at -20°C. Avoid repeated freeze and thaw cycles.

### Application Note

Predicted MW: 200 95kd, Western blotting: 1:500~1:1000

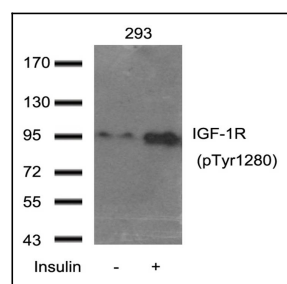


Figure 1: Western blot analysis of extract from 293 cells using IGF-1R(Phospho-Tyr1280) Antibody 35-1273 .