

35-1278: Polyclonal Antibody to MAPKAPK-2 (Phospho-Thr334)

| | |
|--------------------------------|--|
| Clonality : | Polyclonal |
| Application : | WB,IHC,IF |
| Reactivity : | Human,Mouse,Rat |
| Gene : | MAPKAPK2 |
| Gene ID : | 9261 |
| Uniprot ID : | P49137 |
| Format : | Purified |
| Alternative Name : | MAP kinase-activated protein kinase 2, MAPK-activated protein kinase 2, MAPK2, MAPKAP kinase 2, MAPKAPK-2 |
| Isotype : | Rabbit IgG |
| Immunogen Information : | Peptide sequence around phosphorylation site of threonine 334 (P-Q-T(p)-P-L) derived from Human MAPKAPK-2. |

Description

MAPKAPK-2 encodes a member of the Ser/Thr protein kinase family. This kinase is regulated through direct phosphorylation by p38 MAP kinase. In conjunction with p38 MAP kinase, this kinase is known to be involved in many cellular processes including stress and inflammatory responses, nuclear export, gene expression regulation and cell proliferation. Heat shock protein HSP27 was shown to be one of the substrates of this kinase in vivo. Two transcript variants encoding two different isoforms have been found for this gene.

Product Info

| | |
|----------------------------|--|
| Amount : | 50 µl / 100 µl |
| Content : | Supplied at 1.0mg/mL in phosphate buffered saline (without Mg ²⁺ and Ca ²⁺), pH 7.4, 150mM NaCl, 0.02% sodium azide and 50% glycerol. |
| Storage condition : | Store the antibody at 4°C, stable for 6 months. For long-term storage, store at -20°C. Avoid repeated freeze and thaw cycles. |

Application Note

Predicted MW: 49kd, Western blotting: 1:500~1:1000, Immunohistochemistry: 1:50~1:100, Immunofluorescence: 1:100~1:200

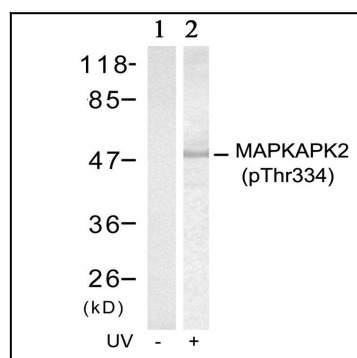


Figure 1: Western blot analysis of extracts from HeLa cells untreated(lane 1) or treated with UV(lane 2) using MAPKAPK-2(Phospho-Thr334) Antibody 35-1278 .

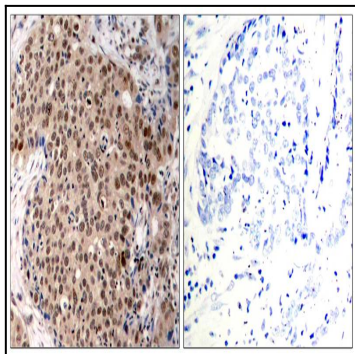


Figure 2: Immunohistochemical analysis of paraffin-embedded human breast carcinoma tissue using MAPKAPK-2(Phospho-Thr334) Antibody 35-1278 (left) or the same antibody preincubated with blocking peptide(right).

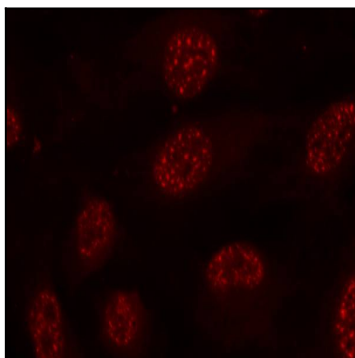


Figure 3: Immunofluorescence staining of methanol-fixed HeLa cells using MAPKAPK-2(Phospho-Thr334) Antibody 35-1278 .