

## 35-1314: Polyclonal Antibody to PLC- Gamma1 (phospho-Tyr771)

<b>Clonality :</b>	Polyclonal
<b>Application :</b>	WB,IF
<b>Reactivity :</b>	Human,Mouse,Rat
<b>Gene :</b>	PLCG1
<b>Gene ID :</b>	5335
<b>Uniprot ID :</b>	P19174
<b>Format :</b>	Purified
<b>Alternative Name :</b>	Phosphoinositide phospholipase C, Phospholipase C-gamma-1
<b>Isotype :</b>	Rabbit IgG
<b>Immunogen Information :</b>	Peptide sequence around phosphorylation site of tyrosine 771 (P-D-Y(p)-G-A) derived from Human PLC-g1.

### Description

PLC-gamma is a major substrate for heparin-binding growth factor 1 (acidic fibroblast growth factor)-activated tyrosine kinase.

### Product Info

<b>Amount :</b>	50 µl / 100 µl
<b>Content :</b>	Supplied at 1.0mg/mL in phosphate buffered saline (without Mg <sup>2+</sup> and Ca <sup>2+</sup> ), pH 7.4, 150mM NaCl, 0.02% sodium azide and 50% glycerol.
<b>Storage condition :</b>	Store the antibody at 4°C, stable for 6 months. For long-term storage, store at -20°C. Avoid repeated freeze and thaw cycles.

### Application Note

Predicted MW: 155kd, Western blotting: 1:500~1:1000, Immunofluorescence: 1:100~1:200

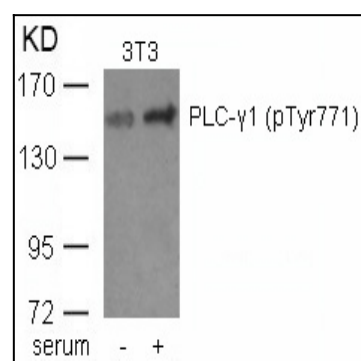


Figure 1: Western blot analysis of extracts from 3T3 cells untreated or treated with serum using PLC-g1(phospho-Tyr771) Antibody 35-1314 .

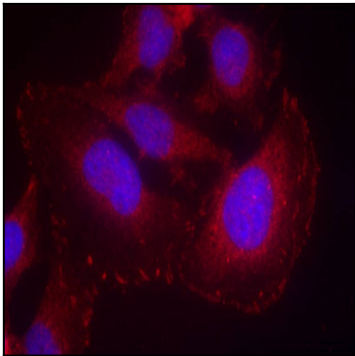


Figure 2: Immunofluorescence staining of methanol-fixed HeLa cells using PLC-g1(phospho-Tyr771) Antibody 35-1314 .