

35-1318: Polyclonal Antibody to MARCKS (phospho-Ser170)

Clonality :	Polyclonal
Application :	WB,IHC
Reactivity :	Human
Gene :	MARCKS
Gene ID :	4082
Uniprot ID :	P29966
Format :	Purified
Alternative Name :	MACS,80K-L,PKCSL,PRKCSL
Isotype :	Rabbit IgG
Immunogen Information :	Peptide sequence around phosphorylation site of Serine 170 (G-F-S(p)-F-K) derived from Human MARCKS.

Description

MARCKS is the most prominent cellular substrate for protein kinase C. This protein binds calmodulin, actin, and synapsin. MARCKS is a filamentous (F) actin cross-linking protein. Ramsden, J.J. (2000) Int. J. Biochem. Cell Biol. 32, 475-479. Graff, J. M. et al. (1989) J. Biol. Chem. 264, 21818-21823. Hartwig, J. H. et al. (1992) Nature 356, 618-622. Thelen, M. et al. (1991) Nature 351, 320-322.

Product Info

Amount :	50 µl / 100 µl
Content :	Supplied at 1.0mg/mL in phosphate buffered saline (without Mg ²⁺ and Ca ²⁺), pH 7.4, 150mM NaCl, 0.02% sodium azide and 50% glycerol.
Storage condition :	Store the antibody at 4°C, stable for 6 months. For long-term storage, store at -20°C. Avoid repeated freeze and thaw cycles.

Application Note

Predicted MW: 80kd, Western blotting: 1:500~1:1000, Immunohistochemistry: 1:50~1:100

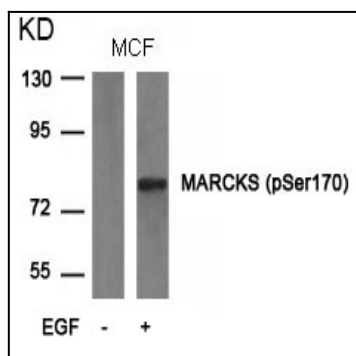


Figure 1: Western blot analysis of extracts from MCF cells untreated or treated with EGF using MARCKS(phospho-Ser170) Antibody 35-1318 .

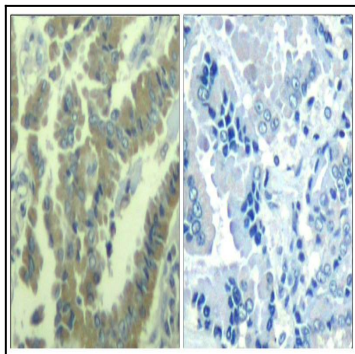


Figure 2: Immunohistochemical analysis of paraffin-embedded human lung carcinoma tissue using MARCKS(Phospho-Ser170) Antibody 35-1318 (left) or the same antibody preincubated with blocking peptide(right).

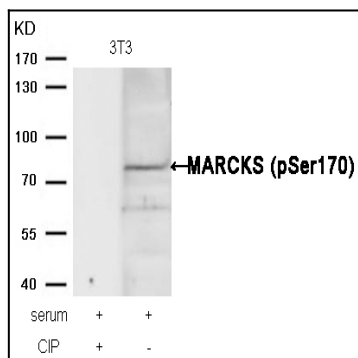


Figure 3: Western blot analysis of extracts from 3T3 cells, treated with serum or calf intestinal phosphatase (CIP), using MARCKS (phospho-Ser170) Antibody 35-1318 .