

### 35-1319: Polyclonal Antibody to Stat2 (phospho-Tyr690)

<b>Clonality :</b>	Polyclonal
<b>Application :</b>	WB
<b>Reactivity :</b>	Human
<b>Gene :</b>	STAT2
<b>Gene ID :</b>	6773
<b>Uniprot ID :</b>	P52630
<b>Format :</b>	Purified
<b>Alternative Name :</b>	P113, ISGF-3, STAT113, MGC59816
<b>Isotype :</b>	Rabbit IgG
<b>Immunogen Information :</b>	Peptide sequence around phosphorylation site of tyrosine 690 (R-K-Y(p)-L-K) derived from Human Stat2

### Description

The protein encoded by this gene is a member of the STAT protein family. In response to cytokines and growth factors, STAT family members are phosphorylated by the receptor associated kinases, and then form homo- or heterodimers that translocate to the cell nucleus where they act as transcription activators. In response to interferon (IFN), this protein forms a complex with STAT1 and IFN regulatory factor family protein p48 (ISGF3G), in which this protein acts as a transactivator, but lacks the ability to bind DNA directly. Transcription adaptor P300/CBP (EP300/CREBBP) has been shown to interact specifically with this protein, which is thought to be involved in the process of blocking IFN- $\alpha$  response by adenovirus. Multiple transcript variants encoding different isoforms have been found for this gene.

### Product Info

<b>Amount :</b>	50 $\mu$ l / 100 $\mu$ l
<b>Content :</b>	Supplied at 1.0mg/mL in phosphate buffered saline (without Mg <sup>2+</sup> and Ca <sup>2+</sup> ), pH 7.4, 150mM NaCl, 0.02% sodium azide and 50% glycerol.
<b>Storage condition :</b>	Store the antibody at 4°C, stable for 6 months. For long-term storage, store at -20°C. Avoid repeated freeze and thaw cycles.

### Application Note

Predicted MW: 113kd, Western blotting: 1:1000

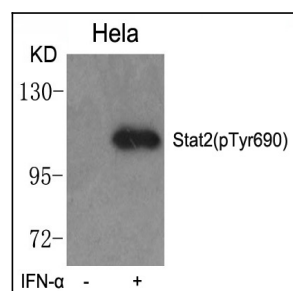


Figure 1: Western blot analysis of extracts from HeLa cells untreated or treated with IFN- $\alpha$  using Stat2(phospho-Tyr690) Antibody 35-1319 .