

35-1324: Polyclonal Antibody to Cyclin E1 (phospho-Thr395)

Clonality :	Polyclonal
Application :	WB
Reactivity :	Human
Gene :	CCNE1
Gene ID :	898
Uniprot ID :	P24864
Format :	Purified
Alternative Name :	CCNE, CCNE1
Isotype :	Rabbit IgG
Immunogen Information :	Peptide sequence around phosphorylation site of threonine 395 (L-L-T(p)-P-P) derived from Human Cyclin E1

Description

The protein encoded by this gene belongs to the highly conserved cyclin family, whose members are characterized by a dramatic periodicity in protein abundance through the cell cycle. Cyclins function as regulators of CDK kinases. Different cyclins exhibit distinct expression and degradation patterns which contribute to the temporal coordination of each mitotic event. This cyclin forms a complex with and functions as a regulatory subunit of CDK2, whose activity is required for cell cycle G1/S transition.

Product Info

Amount :	50 µl / 100 µl
Content :	Supplied at 1.0mg/mL in phosphate buffered saline (without Mg ²⁺ and Ca ²⁺), pH 7.4, 150mM NaCl, 0.02% sodium azide and 50% glycerol.
Storage condition :	Store the antibody at 4°C, stable for 6 months. For long-term storage, store at -20°C. Avoid repeated freeze and thaw cycles.

Application Note

Predicted MW: 48kd, Western blotting: 1:1000

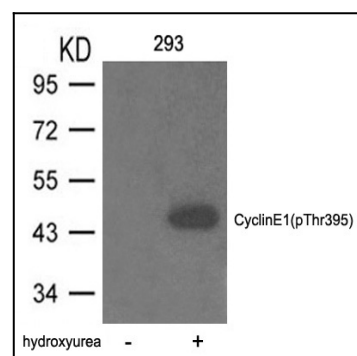


Figure 1: Western blot analysis of extracts from 293 cells untreated or treated with hydroxyurea using Cyclin E1(phospho-Thr395) Antibody 35-1324 .