

35-1325: Polyclonal Antibody to CDK6 (phospho-Tyr13)

Clonality :	Polyclonal
Application :	WB,IHC,IF
Reactivity :	Human,Mouse,Rat
Gene :	CDK6
Gene ID :	1021
Uniprot ID :	Q00534
Format :	Purified
Alternative Name :	Serine/threonine-protein kinase PLSTIRE
Isotype :	Rabbit IgG
Immunogen Information :	Peptide sequence around phosphorylation site of tyrosine 13 (Q-Q-Y(p)-E-C) derived from Human CDK6.

Description

Probably involved in the control of the cell cycle. Interacts with D-type G1 cyclins.

Product Info

Amount :	50 µl / 100 µl
Content :	Supplied at 1.0mg/mL in phosphate buffered saline (without Mg ²⁺ and Ca ²⁺), pH 7.4, 150mM NaCl, 0.02% sodium azide and 50% glycerol.
Storage condition :	Store the antibody at 4°C, stable for 6 months. For long-term storage, store at -20°C. Avoid repeated freeze and thaw cycles.

Application Note

Predicted MW: 36kd, Western blotting: 1:500~1:1000, Immunohistochemistry: 1:50~1:100, Immunofluorescence: 1:100~1:200

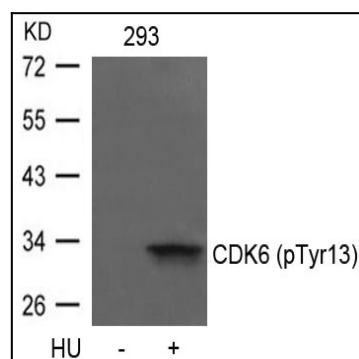


Figure 1: Western blot analysis of extracts from 293 cells untreated or treated with HU using CDK6(phospho-Tyr13) Antibody 35-1325 .

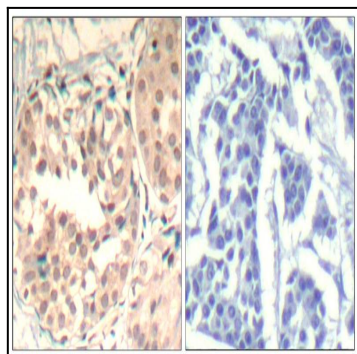


Figure 2: Immunohistochemical analysis of paraffin-embedded human breast carcinoma tissue using CDK6(Phospho-Tyr13) Antibody 35-1325 (left) or the same antibody preincubated with blocking peptide(right).

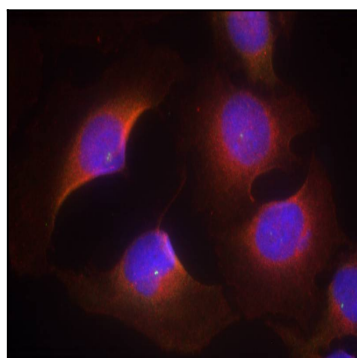


Figure 3: Immunofluorescence staining of methanol-fixed HeLa cells using CDK6(phospho-Tyr13) Antibody 35-1325 .

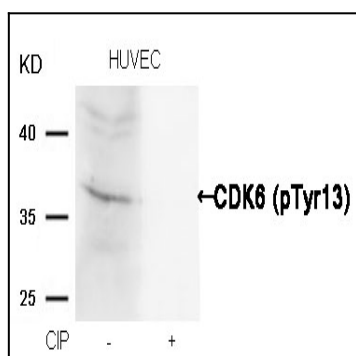


Figure 4: Western blot analysis of extracts from HUVEC cells, treated with calf intestinal phosphatase (CIP), using CDK6 (phospho-Tyr13) Antibody 35-1325 .