

## 35-1326: Polyclonal Antibody to CDK6 (phospho-Tyr24)

<b>Clonality :</b>	Polyclonal
<b>Application :</b>	WB,IHC,IF
<b>Reactivity :</b>	Human,Mouse,Rat
<b>Gene :</b>	CDK6
<b>Gene ID :</b>	1021
<b>Uniprot ID :</b>	Q00534
<b>Format :</b>	Purified
<b>Alternative Name :</b>	Serine/threonine-protein kinase PLSTIRE
<b>Isotype :</b>	Rabbit IgG
<b>Immunogen Information :</b>	Peptide sequence around phosphorylation site of tyrosine 24 (G-A-Y(p)-G-K) derived from Human CDK6.

### Description

Probably involved in the control of the cell cycle. Interacts with D-type G1 cyclins.

### Product Info

<b>Amount :</b>	50 µl / 100 µl
<b>Content :</b>	Supplied at 1.0mg/mL in phosphate buffered saline (without Mg <sup>2+</sup> and Ca <sup>2+</sup> ), pH 7.4, 150mM NaCl, 0.02% sodium azide and 50% glycerol.
<b>Storage condition :</b>	Store the antibody at 4°C, stable for 6 months. For long-term storage, store at -20°C. Avoid repeated freeze and thaw cycles.

### Application Note

Predicted MW: 36kd, Western blotting: 1:500~1:1000, Immunohistochemistry: 1:50~1:100, Immunofluorescence: 1:100~1:200

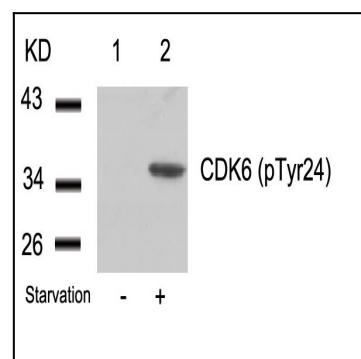


Figure 1: Western blot analysis of extracts from 293 cells untreated(lane 1) or treated with starvation(lane 2) using CDK6(phospho-Tyr24) Antibody 35-1326 .

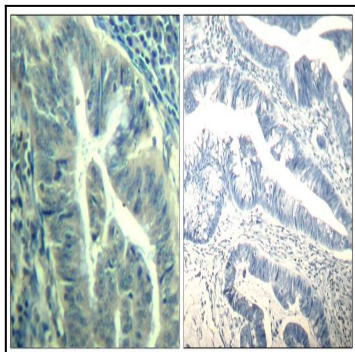


Figure 2: Immunohistochemical analysis of paraffin-embedded human colon carcinoma tissue using CDK6(Phospho-Tyr24) Antibody 35-1326 (left) or the same antibody preincubated with blocking peptide(right).

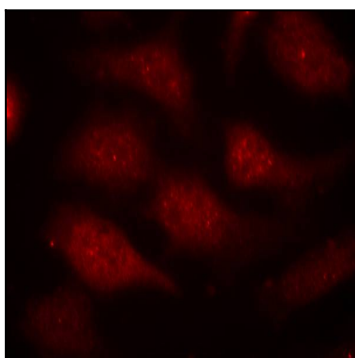


Figure 3: Immunofluorescence staining of methanol-fixed HeLa cells using CDK6(phospho-Tyr24) Antibody 35-1326 .