

## 35-1335: Polyclonal Antibody to Interferon- $\alpha$ Receptor Type I Subunit I (phospho-Ser535/Ser539)

<b>Clonality :</b>	Polyclonal
<b>Application :</b>	WB
<b>Reactivity :</b>	Human
<b>Format :</b>	Purified
<b>Alternative Name :</b>	AVP,IFRC,IFNAR,IFNBR,IFN- $\alpha$ -REC
<b>Isotype :</b>	Rabbit IgG
<b>Immunogen Information :</b>	Peptide sequence around phosphorylation site of serine 535 or serine 539 (D-S(p)-G-N-Y-S(p)-N) derived from Human Interferon- $\alpha$ Receptor Type I Subunit I.

### Description

Associates with IFNAR2 to form the type I interferon receptor. Receptor for interferons alpha and beta. Binding to type I IFNs triggers tyrosine phosphorylation of a number of proteins including JAKs, TYK2, STAT proteins and IFNR alpha- and beta-subunits themselves.

### Product Info

<b>Amount :</b>	50 $\mu$ l / 100 $\mu$ l
<b>Content :</b>	1.0 mg/ml, 100 $\mu$ l
<b>Storage condition :</b>	Store the antibody at 4°C, stable for 6 months. For long-term storage, store at -20°C. Avoid repeated freeze and thaw cycles.

### Application Note

Predicted MW: 70kd, Western blotting: 1: 500~1: 1000

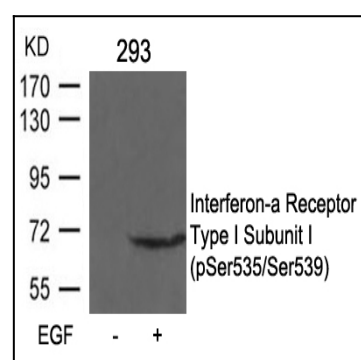


Figure 1: Western blot analysis of extracts from 293 cells untreated or treated with EGF using Interferon- $\alpha$  Receptor Type I Subunit I (phospho-Ser535/Ser539) Antibody 35-1335 .

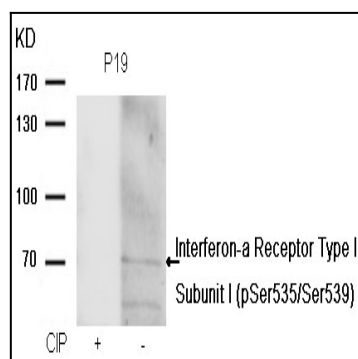


Figure 2: Western blot analysis of extracts from P19 cells, treated with calf intestinal phosphatase (CIP), using Interferon- $\alpha$  Receptor Type I Subunit I (phospho-Ser535/Ser539) Antibody 35-1335 .