

35-1339: Polyclonal Antibody to CK2 Alpha (phospho-Thr360/Ser362)

Clonality :	Polyclonal
Application :	WB
Reactivity :	Human,Mouse,Rat
Gene :	CSNK2A1
Gene ID :	1457
Uniprot ID :	P68400
Format :	Purified
Alternative Name :	CKII, CK2A1, CSNK2A1
Isotype :	Rabbit IgG
Immunogen Information :	Peptide sequence around phosphorylation site of threonine360/serine 362 (V-P-T(p)-P-S(p)-P-L) derived from Human CK2a.

Description

Casein kinases are operationally defined by their preferential utilization of acidic proteins such as caseins as substrates. The α and α' chains contain the catalytic site. Participates in Wnt signaling. CK2 phosphorylates 'Ser-392' of p53/TP53 following UV irradiation.

Product Info

Amount :	50 μ l / 100 μ l
Content :	Supplied at 1.0mg/mL in phosphate buffered saline (without Mg^{2+} and Ca^{2+}), pH 7.4, 150mM NaCl, 0.02% sodium azide and 50% glycerol.
Storage condition :	Store the antibody at 4°C, stable for 6 months. For long-term storage, store at -20°C. Avoid repeated freeze and thaw cycles.

Application Note

Predicted MW: 42kd, Western blotting: 1:1000

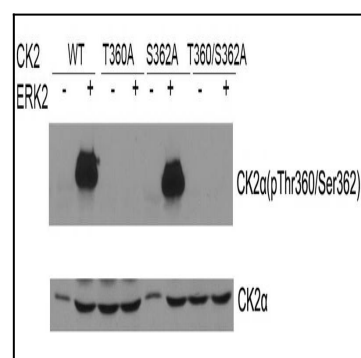


Figure 1: Western blot of CK2a(Phospho- Thr360/Ser362) antibody(35-1339) and CK2a antibody(35-1759) in vitro kinase assay. Both purified ERK2 and CK2 were used. CK2a(Phospho-Thr360/Ser362) antibody could recognize ERK2 phosphorylated wild type CK2a and CK2a when Ser362 was mutated to alanine .