

35-1362: Polyclonal Antibody to Elk-1 (Ab-383)

Clonality :	Polyclonal
Application :	IHC
Reactivity :	Human,Mouse,Rat
Gene :	ELK1
Gene ID :	2002
Uniprot ID :	P19419
Format :	Purified
Alternative Name :	ELK1, ETS-domain protein Elk-1
Isotype :	Rabbit IgG
Immunogen Information :	Peptide sequence around aa.381~385 (T-L-S-P-I) derived from Human Elk1.

Description

Elk-1 is a member of the Ets family of transcription factors and of the ternary complex factor (TCF) subfamily. Proteins of the TCF subfamily form a ternary complex by binding to the the serum response factor and the serum reponse element in the promoter of the c-fos proto-oncogene. The protein encoded by this gene is a nuclear target for the ras-raf-MAPK signaling cascade. Alternatively spliced transcript variants encoding the same protein have been found for this gene

Product Info

Amount :	50 µl / 100 µl
Content :	Supplied at 1.0mg/mL in phosphate buffered saline (without Mg ²⁺ and Ca ²⁺), pH 7.4, 150mM NaCl, 0.02% sodium azide and 50% glycerol.
Storage condition :	Store the antibody at 4°C, stable for 6 months. For long-term storage, store at -20°C. Avoid repeated freeze and thaw cycles.

Application Note

Predicted MW: 47kd, Immunohistochemistry: 1:50~1:100

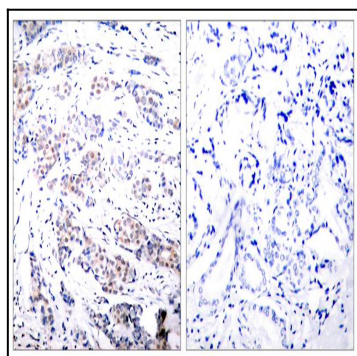


Figure 1: Immunohistochemical analysis of paraffin-embedded human breast carcinoma tissue using Elk-1 (Ab-383) Antibody 35-1362 (left) or the same antibody preincubated with blocking peptide(right).