

35-1365: Polyclonal Antibody to GSK3 Alpha (Ab-21)

Clonality :	Polyclonal
Application :	WB,IHC,IF
Reactivity :	Human,Mouse,Rat
Gene :	GSK3A
Gene ID :	2931
Uniprot ID :	P49840
Format :	Purified
Alternative Name :	Factor A, GSK-3 alpha, kinase GSK3-alpha
Isotype :	Rabbit IgG
Immunogen Information :	Peptide sequence around aa.19~23 (T-S-S-F-A) derived from Human GSK3a.

Description

Implicated in the hormonal control of several regulatory proteins including glycogen synthase, MYB and the transcription factor JUN

Product Info

Amount :	50 µl / 100 µl
Content :	Supplied at 1.0mg/mL in phosphate buffered saline (without Mg ²⁺ and Ca ²⁺), pH 7.4, 150mM NaCl, 0.02% sodium azide and 50% glycerol.
Storage condition :	Store the antibody at 4°C, stable for 6 months. For long-term storage, store at -20°C. Avoid repeated freeze and thaw cycles.

Application Note

Predicted MW: 51kd, Western blotting: 1:500~1:1000, Immunohistochemistry: 1:50~1:100, Immunofluorescence: 1:100~1:200

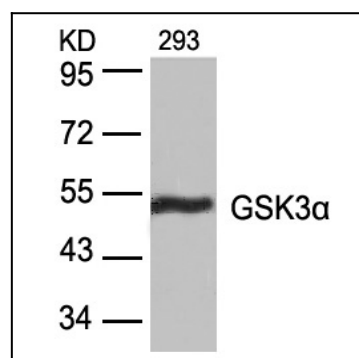


Figure 1: Western blot analysis of extracts from 293 cells using GSK3α(Ab-21) Antibody 35-1365 .

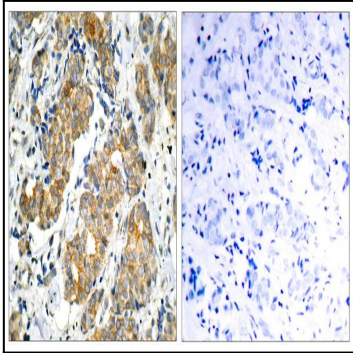


Figure 2: Immunohistochemical analysis of paraffin-embedded human breast carcinoma tissue using GSK3a(Ab-21) Antibody 35-1365 (left) or the same antibody preincubated with blocking peptide(right).

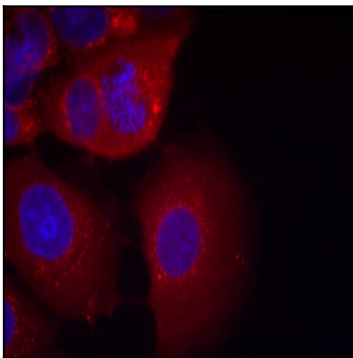


Figure 3: Immunofluorescence staining of methanol-fixed MCF7 cells using GSK3a(Ab-21) Antibody 35-1365 .