

35-1377: Polyclonal Antibody to Rel (Ab-503)

Clonality :	Polyclonal
Application :	IF
Reactivity :	Human
Format :	Purified
Alternative Name :	C-Rel
Isotype :	Rabbit IgG
Immunogen Information :	Peptide sequence around aa.501~505 (T-S-S-D-S) derived from Human Rel.

Description

The REL gene encodes c-Rel, a transcription factor that is a member of the Rel/NFκB family, which also includes RELA (MIM 164014), RELB (604758), NFκB1 (MIM 164011), and NFκB2 (MIM 164012). These proteins are related through a highly conserved N-terminal region termed the 'Rel domain,' which is responsible for DNA binding, dimerization, nuclear localization, and binding to the NFκB inhibitor (MIM 164008) (Belguise and Sonenshein, 2007 (PubMed18037997)).

Product Info

Amount :	50 µl / 100 µl
Content :	Supplied at 1.0mg/mL in phosphate buffered saline (without Mg ²⁺ and Ca ²⁺), pH 7.4, 150mM NaCl, 0.02% sodium azide and 50% glycerol.
Storage condition :	Store the antibody at 4°C, stable for 6 months. For long-term storage, store at -20°C. Avoid repeated freeze and thaw cycles.

Application Note

Predicted MW: 78kd, Immunofluorescence: 1:100~1:200

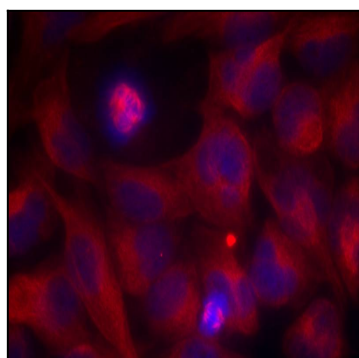


Figure 1: Immunofluorescence staining of methanol-fixed HeLa cells using Rel(Ab-503) Antibody 35-1377 .