

## 35-1382: Polyclonal Antibody to c-Jun (Ab-243) (Discontinued)

<b>Clonality :</b>	Polyclonal
<b>Application :</b>	IHC,WB
<b>Reactivity :</b>	Human
<b>Gene :</b>	JUN
<b>Gene ID :</b>	3725
<b>Uniprot ID :</b>	P05412
<b>Format :</b>	Purified
<b>Alternative Name :</b>	AH119, AP1, Jun A, c-Jun, p39
<b>Isotype :</b>	Rabbit IgG
<b>Immunogen Information :</b>	Peptide sequence around aa.241~245 (P-L-S-P-I) derived from Human c-Jun.

### Description

Transcription factor that recognizes and binds to the enhancer heptamer motif 5'-TGA[CG]TCA-3'.

### Product Info

<b>Amount :</b>	50 µg / 100 µg
<b>Content :</b>	Supplied at 1.0mg/mL in phosphate buffered saline (without Mg <sup>2+</sup> and Ca <sup>2+</sup> ), pH 7.4, 150mM NaCl, 0.02% sodium azide and 50% glycerol.
<b>Storage condition :</b>	Store the antibody at 4°C, stable for 6 months. For long-term storage, store at -20°C. Avoid repeated freeze and thaw cycles.

### Application Note

Predicted MW: 43kd, Western blotting: 1:500~1:1000, Immunohistochemistry: 1:50~1:100

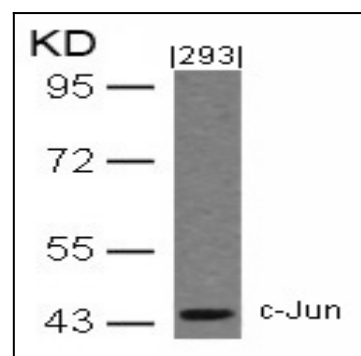


Figure 1: Western blot analysis of extracts from 293 cells using c-Jun(Ab-243) Antibody 35-1382 .

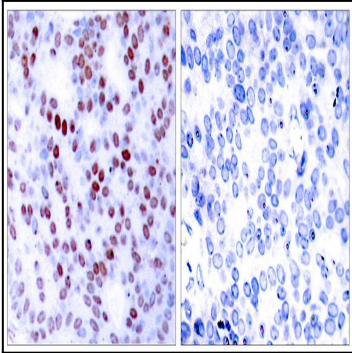


Figure 2: Immunohistochemical analysis of paraffin-embedded human breast carcinoma tissue using c-Jun(Ab-243) Antibody 35-1382 (left) or the same antibody preincubated with blocking peptide(right).