

35-1412: Polyclonal Antibody to p95/NBS1 (Ab-343)

| | |
|--------------------------------|---|
| Clonality : | Polyclonal |
| Application : | WB,IHC |
| Reactivity : | Human |
| Gene : | NBN |
| Gene ID : | 4683 |
| Uniprot ID : | O60934 |
| Format : | Purified |
| Alternative Name : | NBN |
| Isotype : | Rabbit IgG |
| Immunogen Information : | Peptide sequence around aa.341~345 (S-L-S-Q-G) derived from Human p95/NBS1. |

Description

Mutations in p95/NBS1 gene are associated with Nijmegen breakage syndrome, an autosomal recessive chromosomal instability syndrome characterized by microcephaly, growth retardation, immunodeficiency, and cancer predisposition. The encoded protein is a member of the MRE11/RAD50 double-strand break repair complex which consists of 5 proteins. This gene product is thought to be involved in DNA double-strand break repair and DNA damage-induced checkpoint activation.

Product Info

| | |
|----------------------------|--|
| Amount : | 50 µl / 100 µl |
| Content : | Supplied at 1.0mg/mL in phosphate buffered saline (without Mg ²⁺ and Ca ²⁺), pH 7.4, 150mM NaCl, 0.02% sodium azide and 50% glycerol. |
| Storage condition : | Store the antibody at 4°C, stable for 6 months. For long-term storage, store at -20°C. Avoid repeated freeze and thaw cycles. |

Application Note

Predicted MW: 95kd, Western blotting: 1:500~1:1000, Immunohistochemistry: 1:50~1:100

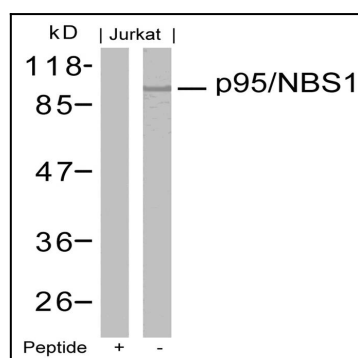


Figure 1: Western blot analysis of extracts from Jurkat cells using p95/NBS1(Ab-343) Antibody 35-1412 and the same antibody preincubated with blocking peptide.

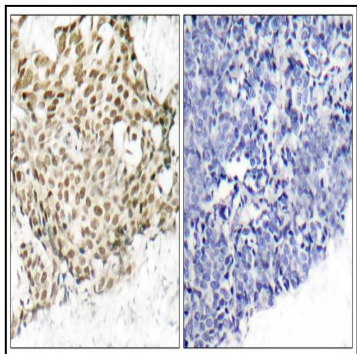


Figure 2: Immunohistochemical analysis of paraffin-embedded human breast carcinoma tissue using p95/NBS1(Ab-343) Antibody 35-1412 (left) or the same antibody preincubated with blocking peptide(right).