

35-1422: Polyclonal Antibody to Estrogen Receptor- Alpha (Ab-167)

| | |
|--------------------------------|--|
| Clonality : | Polyclonal |
| Application : | WB,IHC,IF |
| Reactivity : | Human |
| Gene : | ESR1 |
| Gene ID : | 2099 |
| Uniprot ID : | P03372 |
| Format : | Purified |
| Alternative Name : | ER, ESR, ESR1, ESTR, ESTRA |
| Isotype : | Rabbit IgG |
| Immunogen Information : | Peptide sequence around aa.165~169 (L-A-S-T-N) derived from Human Estrogen Receptor-a. |

Description

Nuclear hormone receptor. The steroid hormones and their receptors are involved in the regulation of eukaryotic gene expression and affect cellular proliferation and differentiation in target tissues.

Product Info

| | |
|----------------------------|--|
| Amount : | 50 µl / 100 µl |
| Content : | Supplied at 1.0mg/mL in phosphate buffered saline (without Mg ²⁺ and Ca ²⁺), pH 7.4, 150mM NaCl, 0.02% sodium azide and 50% glycerol. |
| Storage condition : | Store the antibody at 4°C, stable for 6 months. For long-term storage, store at -20°C. Avoid repeated freeze and thaw cycles. |

Application Note

Predicted MW: 66kd, Western blotting: 1:500~1:1000, Immunohistochemistry: 1:50~1:100, Immunofluorescence: 1:100~1:200

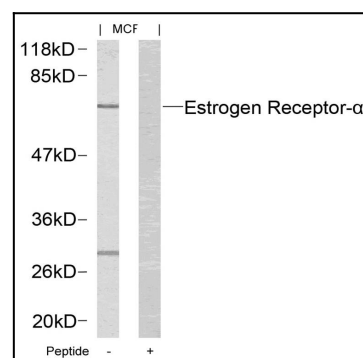


Figure 1: Western blot analysis of extracts from MCF cells using Estrogen Receptor- α (Ab-167) Antibody 35-1422 and the same antibody preincubated with blocking peptide.

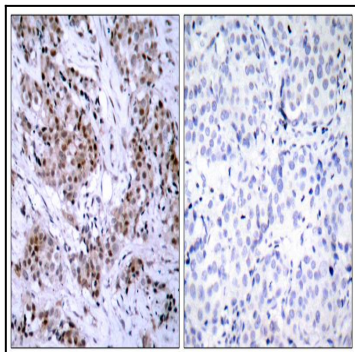


Figure 2: Immunohistochemical analysis of paraffin-embedded human breast carcinoma tissue using Estrogen Receptor-a(Ab-167) Antibody 35-1422 (left) or the same antibody preincubated with blocking peptide(right).

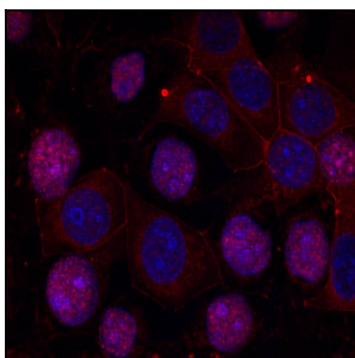


Figure 3: Immunofluorescence staining of methanol-fixed MCF cells using Estrogen Receptor-a(Ab-167) Antibody 35-1422 .