

35-1433: Polyclonal Antibody to VEGFR2 (Ab-951)

Clonality :	Polyclonal
Application :	WB,IHC,IF
Reactivity :	Human
Gene :	KDR
Gene ID :	3791
Uniprot ID :	P35968
Format :	Purified
Alternative Name :	FLK1, KDR, VEGFR2, VGR2, kinase insert domain receptor
Isotype :	Rabbit IgG
Immunogen Information :	Peptide sequence around aa.949~953 (K-D-Y-V-G) derived from Human VEGFR2.

Description

Receptor for VEGF or VEGFC. Has a tyrosine-protein kinase activity. The VEGF-kinase ligand/receptor signaling system plays a key role in vascular development and regulation of vascular permeability. In case of HIV-1 infection, the interaction with extracellular viral Tat protein seems to enhance angiogenesis in Kaposi's sarcoma lesions

Product Info

Amount :	50 µl / 100 µl
Content :	Supplied at 1.0mg/mL in phosphate buffered saline (without Mg ²⁺ and Ca ²⁺), pH 7.4, 150mM NaCl, 0.02% sodium azide and 50% glycerol.
Storage condition :	Store the antibody at 4°C, stable for 6 months. For long-term storage, store at -20°C. Avoid repeated freeze and thaw cycles.

Application Note

Predicted MW: 230kd, Western blotting: 1:500~1:1000, Immunohistochemistry: 1:50~1:100, Immunofluorescence: 1:100~1:200

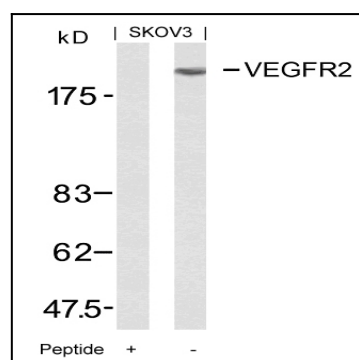


Figure 1: Western blot analysis of extracts from SKOV3 cells using VEGFR2(Ab-951) Antibody 35-1433 and the same antibody preincubated with blocking peptide.

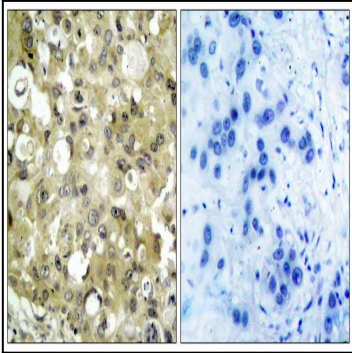


Figure 2: Immunohistochemical analysis of paraffin-embedded human breast carcinoma tissue using VEGFR2(Ab-951) Antibody 35-1433 (left) or the same antibody preincubated with blocking peptide(right).

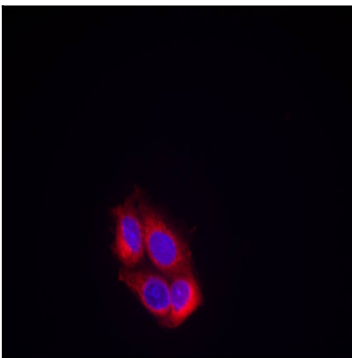


Figure 3: Immunofluorescence staining of methanol-fixed MCF cells using VEGFR2(Ab-951) Antibody 35-1433 .