

35-1448: Polyclonal Antibody to Tau (Ab-235)

Clonality :	Polyclonal
Application :	WB
Reactivity :	Mouse,Human
Gene :	MAPT
Gene ID :	4137
Uniprot ID :	P10636
Format :	Purified
Alternative Name :	Neurofibrillary tangle protein, Paired helical filament-tau
Isotype :	Rabbit IgG
Immunogen Information :	Peptide sequence around aa. 233~237 (P-K-S-P-S) derived from Human Tau.

Description

Promotes microtubule assembly and stability, and might be involved in the establishment and maintenance of neuronal polarity. The C-terminus binds axonal microtubules while the N-terminus binds neural plasma membrane components, suggesting that tau functions as a linker protein between both. Axonal polarity is predetermined by tau localization (in the neuronal cell) in the domain of the cell body defined by the centrosome. The short isoforms allow plasticity of the cytoskeleton whereas the longer isoforms may preferentially play a role in its stabilization.

Product Info

Amount :	50 µl / 100 µl
Content :	Supplied at 1.0mg/mL in phosphate buffered saline (without Mg ²⁺ and Ca ²⁺), pH 7.4, 150mM NaCl, 0.02% sodium azide and 50% glycerol.
Storage condition :	Store the antibody at 4°C, stable for 6 months. For long-term storage, store at -20°C. Avoid repeated freeze and thaw cycles.

Application Note

Predicted MW: 48 62 78 kd, Western blotting: 1:500~1:1000

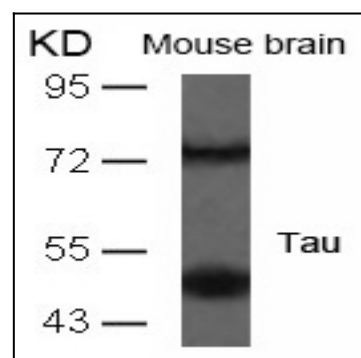


Figure 1: Western blot analysis of extracts from mouse brain tissue using Tau (Ab-235) Antibody 35-1448 .