

35-1472: Polyclonal Antibody to IKK Alpha (Ab-23)

Clonality :	Polyclonal
Application :	WB,IHC
Reactivity :	Human,Mouse,Rat
Gene :	CHUK
Gene ID :	1147
Uniprot ID :	O15111
Format :	Purified
Alternative Name :	I kappa-B kinase alpha, I-kappa-B kinase 1, IKK-A, IKK-alpha, IKK1
Isotype :	Rabbit IgG
Immunogen Information :	Peptide sequence around aa.21~25 (L-G-T-G-G) derived from Human IKK a.

Description

Acts as part of the IKK complex in the conventional pathway of NF-kappa-B activation and phosphorylates inhibitors of NF-kappa-B thus leading to the dissociation of the inhibitor/NF-kappa-B complex and ultimately the degradation of the inhibitor. As part of the non-canonical pathway of NF-kappa-B activation, the MAP3K14-activated CHUK/IKKA homodimer phosphorylates NFKB2/p100 associated with RelB, inducing its proteolytic processing to NFKB2/p52 and the formation of NF-kappa-B RelB-p52 complexes. Also phosphorylates NCOA3. Phosphorylates 'Ser-10' of histone H3 at NF-kappa-B-regulated promoters during inflammatory responses triggered by cytokines.

Product Info

Amount :	50 µl / 100 µl
Content :	Supplied at 1.0mg/mL in phosphate buffered saline (without Mg2+ and Ca2+), pH 7.4, 150mM NaCl, 0.02% sodium azide and 50% glycerol.
Storage condition :	Store the antibody at 4°C, stable for 6 months. For long-term storage, store at -20°C. Avoid repeated freeze and thaw cycles.

Application Note

Predicted MW: 85kd, Western blotting: 1:500~1:1000, Immunohistochemistry: 1:50~1:100

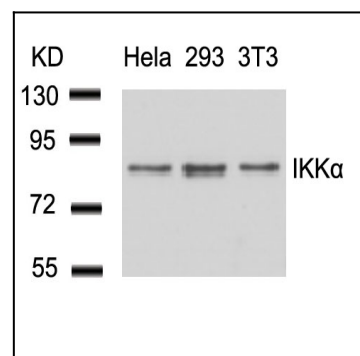


Figure 1: Western blot analysis of extracts from HeLa, 293 and 3T3 cells using IKK a (Ab-23) Antibody 35-1472 .

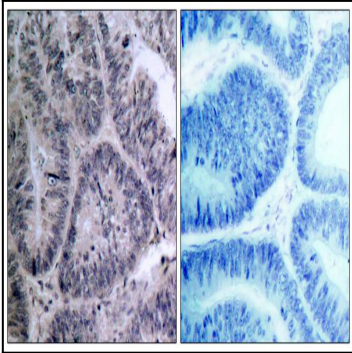


Figure 2: Immunohistochemical analysis of paraffin-embedded human colon carcinoma tissue using IKK a (Ab-23) Antibody 35-1472 (left) or the same antibody preincubated with blocking peptide(right).