

## 35-1473: Polyclonal Antibody to MyoD (Ab-200)

|                                |                                                                         |
|--------------------------------|-------------------------------------------------------------------------|
| <b>Clonality :</b>             | Polyclonal                                                              |
| <b>Application :</b>           | WB                                                                      |
| <b>Reactivity :</b>            | Human,Mouse,Rat                                                         |
| <b>Gene :</b>                  | MYOD1                                                                   |
| <b>Gene ID :</b>               | 4654                                                                    |
| <b>Uniprot ID :</b>            | P15172                                                                  |
| <b>Format :</b>                | Purified                                                                |
| <b>Alternative Name :</b>      | MYF3, MYOD, MYOD1                                                       |
| <b>Isotype :</b>               | Rabbit IgG                                                              |
| <b>Immunogen Information :</b> | Peptide sequence around aa.198~202 (A-S-S-P-R) derived from Human MyoD. |

### Description

MyoD encodes a nuclear protein that belongs to the basic helix-loop-helix family of transcription factors and the myogenic factors subfamily. It regulates muscle cell differentiation by inducing cell cycle arrest, a prerequisite for myogenic initiation. The protein is also involved in muscle regeneration. It activates its own transcription which may stabilize commitment to myogenesis.

### Product Info

|                            |                                                                                                                                                              |
|----------------------------|--------------------------------------------------------------------------------------------------------------------------------------------------------------|
| <b>Amount :</b>            | 50 µl / 100 µl                                                                                                                                               |
| <b>Content :</b>           | Supplied at 1.0mg/mL in phosphate buffered saline (without Mg <sup>2+</sup> and Ca <sup>2+</sup> ), pH 7.4, 150mM NaCl, 0.02% sodium azide and 50% glycerol. |
| <b>Storage condition :</b> | Store the antibody at 4°C, stable for 6 months. For long-term storage, store at -20°C. Avoid repeated freeze and thaw cycles.                                |

### Application Note

Predicted MW: 40kd, Western blotting: 1:500~1:1000

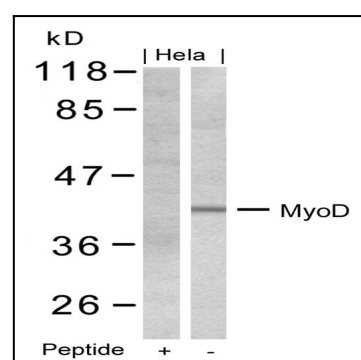


Figure 1: Western blot analysis of extracts from HeLa cells using MyoD (Ab-200) Antibody 35-1473 and the same antibody preincubated with blocking peptide.