

## 35-1474: Polyclonal Antibody to ASK1 (Ab-83)

<b>Clonality :</b>	Polyclonal
<b>Application :</b>	WB,IHC,IF
<b>Reactivity :</b>	Human
<b>Gene :</b>	MAP3K5
<b>Gene ID :</b>	4217
<b>Uniprot ID :</b>	Q99683
<b>Format :</b>	Purified
<b>Alternative Name :</b>	ASK-1, M3K5, MAP3K5, MAPK/ERK kinase kinase 5, MAPKKK5
<b>Isotype :</b>	Rabbit IgG
<b>Immunogen Information :</b>	Peptide sequence around aa.81~85 (G-S-S-V-G) derived from Human ASK1.

### Description

Component of a protein kinase signal transduction cascade. Phosphorylates and activates MAP2K4 and MAP2K6, which in turn activate the JNK and p38 MAP kinases, respectively. Overexpression induces apoptotic cell death.

### Product Info

<b>Amount :</b>	50 µl / 100 µl
<b>Content :</b>	Supplied at 1.0mg/mL in phosphate buffered saline (without Mg <sup>2+</sup> and Ca <sup>2+</sup> ), pH 7.4, 150mM NaCl, 0.02% sodium azide and 50% glycerol.
<b>Storage condition :</b>	Store the antibody at 4°C, stable for 6 months. For long-term storage, store at -20°C. Avoid repeated freeze and thaw cycles.

### Application Note

Predicted MW: 155kd, Western blotting: 1:500~1:1000, Immunohistochemistry: 1:50~1:100, Immunofluorescence: 1:100~1:200

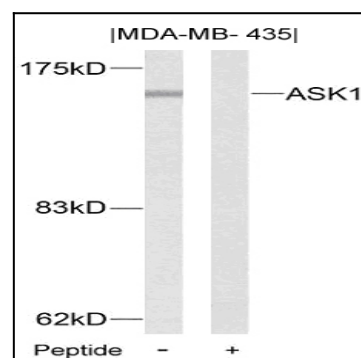


Figure 1: Western blot analysis of extracts from MDA-MB-435 cells using ASK1 (Ab-83) Antibody 35-1474 and the same antibody preincubated with blocking peptide.

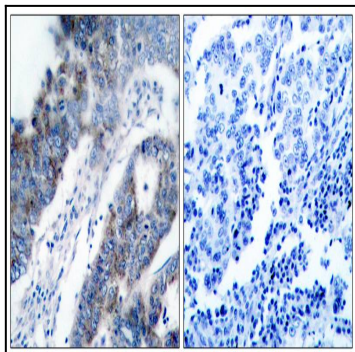


Figure 2: Immunohistochemical analysis of paraffin-embedded human breast carcinoma tissue using ASK1 (Ab-83) Antibody 35-1474 (left) or the same antibody preincubated with blocking peptide(right).

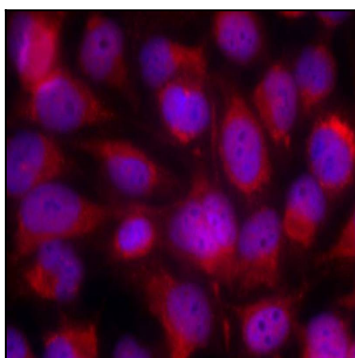


Figure 3: Immunofluorescence staining of methanol-fixed HeLa cells using ASK1 (Ab-83) Antibody 35-1474 .