

## 35-1486: Polyclonal Antibody to FKHR (Ab-256)

<b>Clonality :</b>	Polyclonal
<b>Application :</b>	WB,IHC,IF
<b>Reactivity :</b>	Human,Mouse,Rat
<b>Gene :</b>	FOXO1
<b>Gene ID :</b>	2308
<b>Uniprot ID :</b>	Q12778
<b>Format :</b>	Purified
<b>Alternative Name :</b>	FOXO1
<b>Isotype :</b>	Rabbit IgG
<b>Immunogen Information :</b>	Peptide sequence around aa.254~258 (A-A-S-M-D) derived from Human FKHR/FOXO1A.

### Description

FKHR belongs to the forkhead family of transcription factors, which are characterized by a distinct forkhead domain. It may play a role in myogenic growth and differentiation. The mammalian DAF-16-like transcription factors, FKHR, FKHL1, and AFX, function as key regulators of insulin signaling, cell cycle progression, and apoptosis downstream of phosphoinositide 3-kinase. Gene activation through binding to insulin response sequences has been essential for mediating these functions. D-type Cyclins (in Class III) is required for FKHR mediated inhibition of cell cycle progression and transformation. FKHR gene is mapped to chromosome 13q14 Gan L, et al. (2005) J Neurochem; 93(5): 1209-19. Smith WW, et al. (2005) J Cell Biol; 169(2): 331-9. Di Maira G, et al. (2005) Cell Death Differ; 12(6): 668-77. Horn S, et al. (2004) Leukemia; 18(11): 1839-49. Zhao X, et al. (2004) Biochem J 4; 378(Pt 3): 839-49.

### Product Info

<b>Amount :</b>	50 µl / 100 µl
<b>Content :</b>	Supplied at 1.0mg/mL in phosphate buffered saline (without Mg <sup>2+</sup> and Ca <sup>2+</sup> ), pH 7.4, 150mM NaCl, 0.02% sodium azide and 50% glycerol.
<b>Storage condition :</b>	Store the antibody at 4°C, stable for 6 months. For long-term storage, store at -20°C. Avoid repeated freeze and thaw cycles.

### Application Note

Predicted MW: 78-82 kd, Western blotting: 1:500~1:1000, Immunohistochemistry: 1:50~1:100, Immunofluorescence: 1:100~1:200

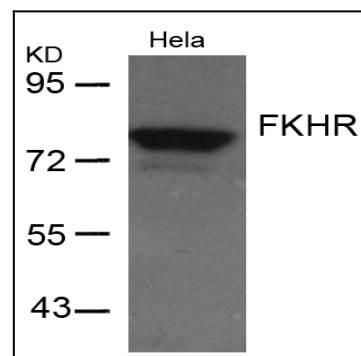


Figure 1: Western blot analysis of extracts from HeLa cells using FKHR (Ab-256) Antibody 35-1486 .

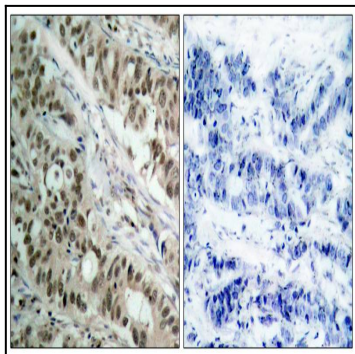


Figure 2: Immunohistochemical analysis of paraffin-embedded human breast carcinoma tissue using FKHR (Ab-256) Antibody 35-1486 (left) or the same antibody preincubated with blocking peptide(right).

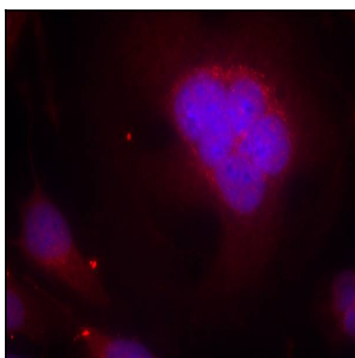


Figure 3: Immunofluorescence staining of methanol-fixed HeLa cells using FKHR (Ab-256) Antibody 35-1486 .