

### 35-1501: Polyclonal Antibody to NMDAR2B (Ab-1474)

<b>Clonality :</b>	Polyclonal
<b>Application :</b>	IF
<b>Reactivity :</b>	Rat,Mouse,Human
<b>Gene :</b>	GRIN2B
<b>Gene ID :</b>	2904
<b>Uniprot ID :</b>	Q13224
<b>Format :</b>	Purified
<b>Alternative Name :</b>	GRIN2B, NMDE2, NME2, NR2B, NR3
<b>Isotype :</b>	Rabbit IgG
<b>Immunogen Information :</b>	Peptide sequence around aa.1472~1476 (H-V-Y-E-K) derived from Human NMDAR2B.

#### Description

NMDA receptor subtype of glutamate-gated ion channels with high calcium permeability and voltage-dependent sensitivity to magnesium. Mediated by glycine.

#### Product Info

<b>Amount :</b>	50 µl / 100 µl
<b>Content :</b>	Supplied at 1.0mg/mL in phosphate buffered saline (without Mg <sup>2+</sup> and Ca <sup>2+</sup> ), pH 7.4, 150mM NaCl, 0.02% sodium azide and 50% glycerol.
<b>Storage condition :</b>	Store the antibody at 4°C, stable for 6 months. For long-term storage, store at -20°C. Avoid repeated freeze and thaw cycles.

#### Application Note

Predicted MW: 190kd, Immunofluorescence: 1:100~1:200

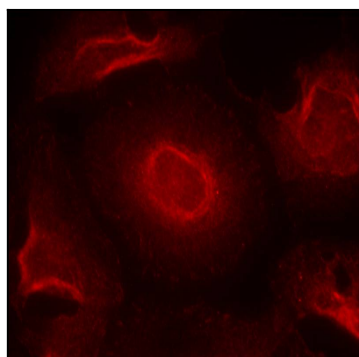


Figure 1: Immunofluorescence staining of methanol-fixed HeLa cells using NMDAR2B (Ab-1474) Antibody 35-1501 .