

35-1503: Polyclonal Antibody to PAK1 (Ab-212)

Clonality :	Polyclonal
Application :	WB,IHC,IF
Reactivity :	Human,Mouse,Rat
Gene :	PAK1
Gene ID :	5058
Uniprot ID :	Q13153
Format :	Purified
Alternative Name :	p21-activated kinase 1
Isotype :	Rabbit IgG
Immunogen Information :	Peptide sequence around aa. 210~214 (P-V-T-P-T) derived from Human PAK1.

Description

The activated kinase acts on a variety of targets. Likely to be the GTPase effector that links the Rho-related GTPases to the JNK MAP kinase pathway. Activated by CDC42 and RAC1. Involved in dissolution of stress fibers and reorganization of focal complexes. Involved in regulation of microtubule biogenesis through phosphorylation of TBCB. Activity is inhibited in cells undergoing apoptosis, potentially due to binding of CDC2L1 and CDC2L2.

Product Info

Amount :	50 µl / 100 µl
Content :	Supplied at 1.0mg/mL in phosphate buffered saline (without Mg ²⁺ and Ca ²⁺), pH 7.4, 150mM NaCl, 0.02% sodium azide and 50% glycerol.
Storage condition :	Store the antibody at 4°C, stable for 6 months. For long-term storage, store at -20°C. Avoid repeated freeze and thaw cycles.

Application Note

Predicted MW: 68kd, Western blotting: 1:500~1:1000, Immunohistochemistry: 1:50~1:100, Immunofluorescence: 1:100~1:200

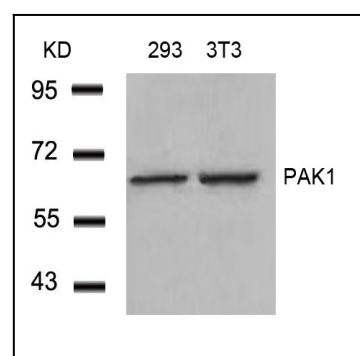


Figure 1: Western blot analysis of extracts from 293 and 3T3 cells using PAK1 (Ab-212) Antibody 35-1503 .

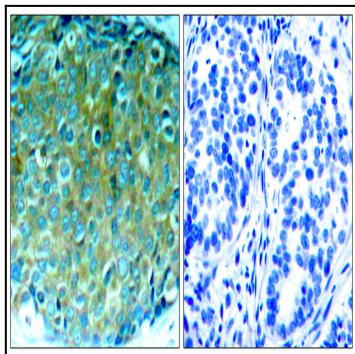


Figure 2: Immunohistochemical analysis of paraffin-embedded human breast carcinoma tissue using PAK1 (Ab-212) Antibody 35-1503 (left) or the same antibody preincubated with blocking peptide(right).

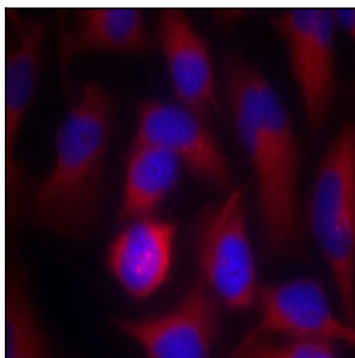


Figure 3: Immunofluorescence staining of methanol-fixed HeLa cells using PAK1 (Ab-212) Antibody 35-1503 .