

### 35-1506: Polyclonal Antibody to cdc25A (Ab-76)

|                                |  |
|--------------------------------|--|
| <b>Clonality :</b>             | Polyclonal   |
| <b>Application :</b>           | WB   |
| <b>Reactivity :</b>            | Human,Mouse  |
| <b>Gene :</b>                  | CDC25A   |
| <b>Gene ID :</b>               | 993  |
| <b>Uniprot ID :</b>            | P30304   |
| <b>Format :</b>                | Purified   |
| <b>Alternative Name :</b>      | CDC25M3, MPIP1, Dual specificity phosphatase Cdc25A                      |
| <b>Isotype :</b>               | Rabbit IgG   |
| <b>Immunogen Information :</b> | Peptide sequence around aa. 73~77 (M-G-S-S-E) derived from Human cdc25A. |

### Description

Tyrosine protein phosphatase which functions as a dosage-dependent inducer of mitotic progression. Directly dephosphorylates CDC2 and stimulates its kinase activity. Also dephosphorylates CDK2 in complex with cyclin E, in vitro.

### Product Info

|                            |   |
|----------------------------|---|
| <b>Amount :</b>            | 50 µl / 100 µl  |
| <b>Content :</b>           | Supplied at 1.0mg/mL in phosphate buffered saline (without Mg2+ and Ca2+), pH 7.4, 150mM NaCl, 0.02% sodium azide and 50% glycerol. |
| <b>Storage condition :</b> | Store the antibody at 4°C, stable for 6 months. For long-term storage, store at -20°C. Avoid repeated freeze and thaw cycles.       |

### Application Note

Predicted MW: 70kd, Western blotting: 1:500~1:1000

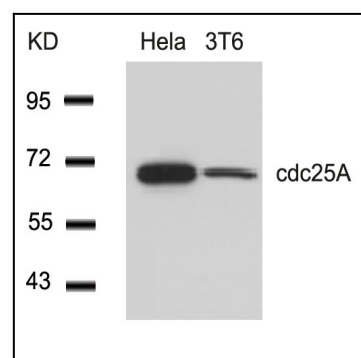


Figure 1: Western blot analysis of extracts from HeLa and 3T6 cells using cdc25A(Ab-76) Antibody 35-1506 .