

## 35-1507: Polyclonal Antibody to cofilin (Ab-3)

<b>Clonality :</b>	Polyclonal
<b>Application :</b>	WB,IHC
<b>Reactivity :</b>	Human,Mouse,Rat
<b>Gene :</b>	CFL1
<b>Gene ID :</b>	1072
<b>Uniprot ID :</b>	P23528
<b>Format :</b>	Purified
<b>Alternative Name :</b>	CFL, CFL1, COF1, Cofilin
<b>Isotype :</b>	Rabbit IgG
<b>Immunogen Information :</b>	Peptide sequence around aa. 1~5 (M-A-S-G-V) derived from Human cofilin.

### Description

Controls reversibly actin polymerization and depolymerization in a pH-sensitive manner. It has the ability to bind G- and F-actin in a 1:1 ratio of cofilin to actin. It is the major component of intranuclear and cytoplasmic actin rods. Kobayashi M, et al. (2006) EMBO J 25(4): 713-26. Wang Y, et al. (2005) Biol Chem 280(13): 12683-9. Smith-Beckerman DM, et al. (2005) Mol Cell Proteomics: 156-68.

### Product Info

<b>Amount :</b>	50 µl / 100 µl
<b>Content :</b>	Supplied at 1.0mg/mL in phosphate buffered saline (without Mg <sup>2+</sup> and Ca <sup>2+</sup> ), pH 7.4, 150mM NaCl, 0.02% sodium azide and 50% glycerol.
<b>Storage condition :</b>	Store the antibody at 4°C, stable for 6 months. For long-term storage, store at -20°C. Avoid repeated freeze and thaw cycles.

### Application Note

Predicted MW: 19kd, Western blotting: 1:500~1:1000, Immunohistochemistry: 1:50~1:100

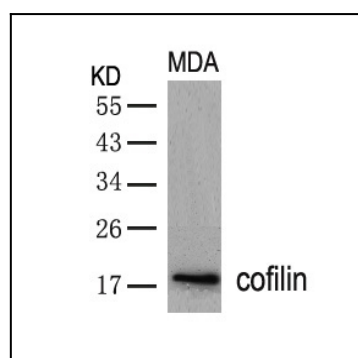


Figure 1: Western blot analysis of extracts from MDA cells using cofilin(Ab-3) Antibody 35-1507 .

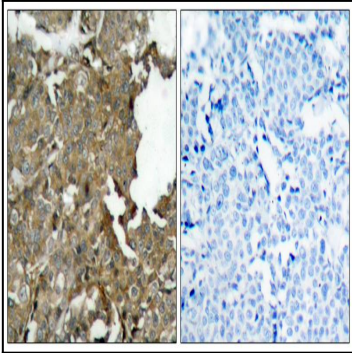


Figure 2: Immunohistochemical analysis of paraffin-embedded human breast carcinoma tissue using cofilin(Ab-3) Antibody 35-1507 (left) or the same antibody preincubated with blocking peptide(right).