

35-1521: Polyclonal Antibody to DNA PKcs (Ab-2609)

Clonality :	Polyclonal
Application :	WB
Reactivity :	Human
Gene :	PRKDC
Gene ID :	5591
Uniprot ID :	P78527
Format :	Purified
Alternative Name :	DNPK1, PRKD, PRKDC, XRCC7, P460
Isotype :	Rabbit IgG
Immunogen Information :	Peptide sequence around aa.2607~2611 (V-E-T-Q-A) derived from Human DNA-PK.

Description

The PRKDC gene encodes the catalytic subunit of a nuclear DNA-dependent serine/threonine protein kinase (DNA-PK). The second component is the autoimmune antigen Ku (MIM 152690), which is encoded by the G22P1 gene on chromosome 22q. On its own, the catalytic subunit of DNA-PK is inactive and relies on the G22P1 component to direct it to the DNA and trigger its kinase activity; PRKDC must be bound to DNA to express its catalytic properties

Product Info

Amount :	50 µl / 100 µl
Content :	Supplied at 1.0mg/mL in phosphate buffered saline (without Mg ²⁺ and Ca ²⁺), pH 7.4, 150mM NaCl, 0.02% sodium azide and 50% glycerol.
Storage condition :	Store the antibody at 4°C, stable for 6 months. For long-term storage, store at -20°C. Avoid repeated freeze and thaw cycles.

Application Note

Predicted MW: 450kd, Western blotting: 1:500~1:1000

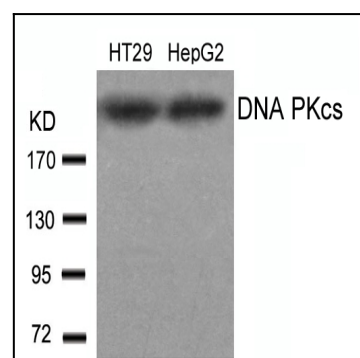


Figure 1: Western blot analysis of extracts from HT29 and HepG2 cells using DNA PKcs(Ab-2609) Antibody 35-1521 .