

35-1525: Polyclonal Antibody to PLC Gamma2 (Ab-753)

Clonality :	Polyclonal
Application :	WB,IF
Reactivity :	Human,Mouse,Rat
Gene :	PLCG2
Gene ID :	5336
Uniprot ID :	P16885
Format :	Purified
Alternative Name :	Phosphoinositide phospholipase C, Phospholipase C-gamma-2
Isotype :	Rabbit IgG
Immunogen Information :	Peptide sequence around aa. 751~755 (S-L-Y-D-V) derived from Human PLCg2.

Description

The production of the second messenger molecules diacylglycerol. (DAG) and inositol 1,4,5-trisphosphate (IP3) is mediated by activated phosphatidylinositol-specific phospholipase C enzymes. It is a crucial enzyme in transmembrane signaling.

Product Info

Amount :	50 µl / 100 µl
Content :	Supplied at 1.0mg/mL in phosphate buffered saline (without Mg ²⁺ and Ca ²⁺), pH 7.4, 150mM NaCl, 0.02% sodium azide and 50% glycerol.
Storage condition :	Store the antibody at 4°C, stable for 6 months. For long-term storage, store at -20°C. Avoid repeated freeze and thaw cycles.

Application Note

Predicted MW: 150kd, Western blotting: 1:500~1:1000, Immunofluorescence: 1:100~1:200

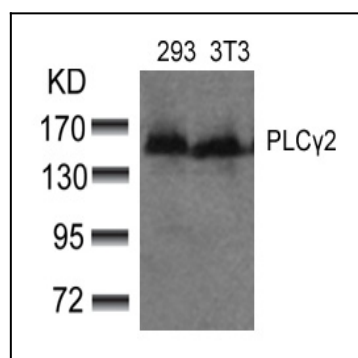


Figure 1: Western blot analysis of extracts from 293 and 3T3 cells using PLCg2(Ab-753) Antibody 35-1525 .

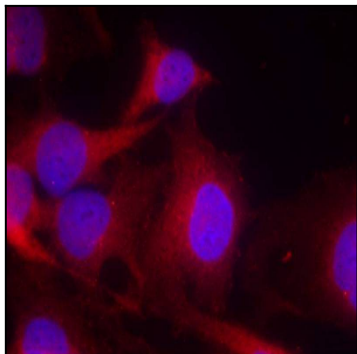


Figure 2: Immunofluorescence staining of methanol-fixed HeLa cells using PLCg2(Ab-753) Antibody 35-1525 .