

## 35-1532: Polyclonal Antibody to EGFR (Ab-693)

<b>Clonality :</b>	Polyclonal
<b>Application :</b>	WB
<b>Reactivity :</b>	Human,Mouse,Rat
<b>Gene :</b>	EGFR
<b>Gene ID :</b>	1956
<b>Uniprot ID :</b>	P00533
<b>Format :</b>	Purified
<b>Alternative Name :</b>	Receptor tyrosine-protein kinase ErbB-1, ERBB1
<b>Isotype :</b>	Rabbit IgG
<b>Immunogen Information :</b>	Peptide sequence around aa.691~695 (P-L-T-P-S) derived from Human EGFR.

### Description

Receptor for EGF, but also for other members of the EGF family, as TGF- $\alpha$ , amphiregulin, betacellulin, heparin-binding EGF-like growth factor, GP30 and vaccinia virus growth factor. Is involved in the control of cell growth and differentiation Doherty JK, et al. (1999) Proc Natl Acad Sci U S A; 96(19): 10869-10874 Wu TT, et al. (1998) Mol Biol Cell; 9(7): 1661-1674 O

### Product Info

<b>Amount :</b>	50 $\mu$ l / 100 $\mu$ l
<b>Content :</b>	Supplied at 1.0mg/mL in phosphate buffered saline (without Mg <sup>2+</sup> and Ca <sup>2+</sup> ), pH 7.4, 150mM NaCl, 0.02% sodium azide and 50% glycerol.
<b>Storage condition :</b>	Store the antibody at 4°C, stable for 6 months. For long-term storage, store at -20°C. Avoid repeated freeze and thaw cycles.

### Application Note

Predicted MW: 175kd, Western blotting: 1:500~1:1000

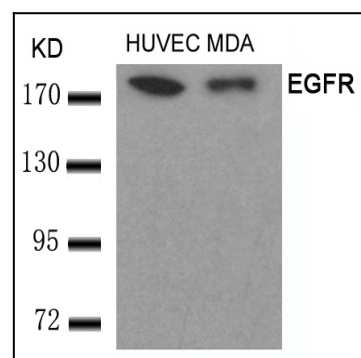


Figure 1: Western blot analysis of extracts from HUVEC and MDA cells using EGFR(Ab-693) Antibody 35-1532 .