

35-1537: Polyclonal Antibody to Paxillin (Ab-31)

Clonality :	Polyclonal
Application :	WB,IHC
Reactivity :	Human
Gene :	PXN
Gene ID :	5829
Uniprot ID :	P49023
Format :	Purified
Alternative Name :	Paxillin; Pxn
Isotype :	Rabbit IgG
Immunogen Information :	Peptide sequence around aa.29~33 (T-P-Y-S-Y) derived from Human Paxillin.

Description

An antiphosphotyrosine antibody was used to identify proteins that are phosphorylated in Rous sarcoma virus-transformed chick embryo fibroblasts, and a 76-kD protein was obtained that localizes to focal adhesions at the ends of actin-containing stress fibers in nontransformed cells (Ref.1). This protein was purified from chicken gizzard smooth muscle, and was named Pxn (Paxillin) ('paxillus' means 'small stake' or 'peg' in Latin) as a protein tethered to the membrane at focal adhesions Davidson D, et al. (2001) EMBO J; 20(13): 3414-3426 Kook S, et al. (2000) Mol Biol Cell; 11(3): 929-939 Fleming I, et al. (1999) Proc Natl Acad Sci U S A; 96(3): 1123-1128 Goldberg MB, et al. (2001) Microbiol Mol Biol Rev; 65(4): 595-626 Thomas JT, et al. (1999) Proc Natl Acad Sci U S A; 96(15): 8449-8454

Product Info

Amount :	50 µl / 100 µl
Content :	Supplied at 1.0mg/mL in phosphate buffered saline (without Mg ²⁺ and Ca ²⁺), pH 7.4, 150mM NaCl, 0.02% sodium azide and 50% glycerol.
Storage condition :	Store the antibody at 4°C, stable for 6 months. For long-term storage, store at -20°C. Avoid repeated freeze and thaw cycles.

Application Note

Predicted MW: 68kd, Western blotting: 1:500~1:1000, Immunohistochemistry: 1:50~1:100

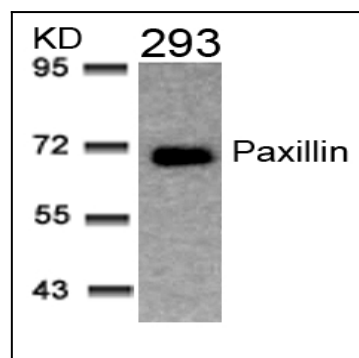


Figure 1: Western blot analysis of extracts from 293 cells using Paxillin(Ab-31) Antibody 35-1537 .

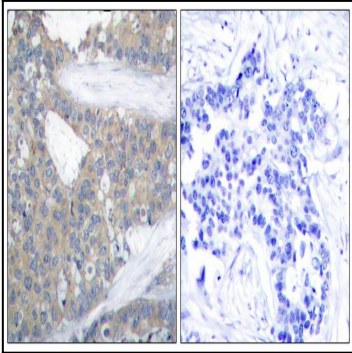


Figure 2: Immunohistochemical analysis of paraffin-embedded human breast carcinoma tissue using Paxillin(Ab-31) Antibody 35-1537 (left) or the same antibody preincubated with blocking peptide(right).