

### 35-1538: Polyclonal Antibody to Ezrin (Ab-567)

<b>Clonality :</b>	Polyclonal
<b>Application :</b>	WB
<b>Reactivity :</b>	Human,Mouse,Rat
<b>Gene :</b>	EZR
<b>Gene ID :</b>	7430
<b>Uniprot ID :</b>	P15311
<b>Format :</b>	Purified
<b>Alternative Name :</b>	Cytovillin, EZRI, VIL2, Villin 2, p81
<b>Isotype :</b>	Rabbit IgG
<b>Immunogen Information :</b>	Peptide sequence around aa. 565~569 (Y-K-T-L-R) derived from Human Ezrin.

#### Description

Probably involved in connections of major cytoskeletal structures to the plasma membrane. In epithelial cells, required for the formation of microvilli and membrane ruffles on the apical pole. Along with PLEKHG6, required for normal macropinocytosis.

#### Product Info

<b>Amount :</b>	50 µl / 100 µl
<b>Content :</b>	Supplied at 1.0mg/mL in phosphate buffered saline (without Mg <sup>2+</sup> and Ca <sup>2+</sup> ), pH 7.4, 150mM NaCl, 0.02% sodium azide and 50% glycerol.
<b>Storage condition :</b>	Store the antibody at 4°C, stable for 6 months. For long-term storage, store at -20°C. Avoid repeated freeze and thaw cycles.

#### Application Note

Predicted MW: 81kd, Western blotting: 1:500~1:1000

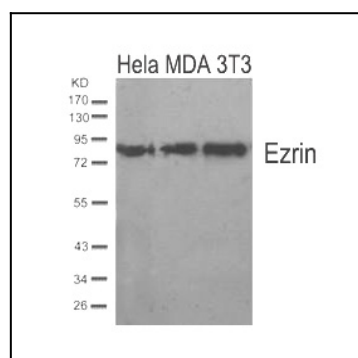


Figure 1: Western blot analysis of extracts from HeLa, MDA and 3T3 cells using Ezrin(Ab-567) Antibody 35-1538 .