

35-1543: Polyclonal Antibody to GABRB1 (Ab-434)

| | |
|--------------------------------|---|
| Clonality : | Polyclonal |
| Application : | WB |
| Reactivity : | Rat,Mouse,Human |
| Gene : | GABRB1 |
| Gene ID : | 2560 |
| Uniprot ID : | P18505 |
| Format : | Purified |
| Alternative Name : | GABA(A) receptor, GABA(A)R beta-1, GBRB1, GABA-RB |
| Isotype : | Rabbit IgG |
| Immunogen Information : | Peptide sequence around aa.432~436 (R-A-S-Q-L) derived from Human GABRB1. |

Description

The gamma-aminobutyric acid (GABA) A receptor is a multisubunit chloride channel that mediates the fastest inhibitory synaptic transmission in the central nervous system. This gene encodes GABA A receptor, beta 1 subunit. It is mapped to chromosome 4p12 in a cluster comprised of genes encoding a 4, a 2 and gamma 1 subunits of the GABA A receptor. Alteration of this gene is implicated in the pathogenetics of schizophrenia.

Product Info

| | |
|----------------------------|--|
| Amount : | 50 µl / 100 µl |
| Content : | Supplied at 1.0mg/mL in phosphate buffered saline (without Mg ²⁺ and Ca ²⁺), pH 7.4, 150mM NaCl, 0.02% sodium azide and 50% glycerol. |
| Storage condition : | Store the antibody at 4°C, stable for 6 months. For long-term storage, store at -20°C. Avoid repeated freeze and thaw cycles. |

Application Note

Predicted MW: 54kd, Western blotting: 1:500~1:1000

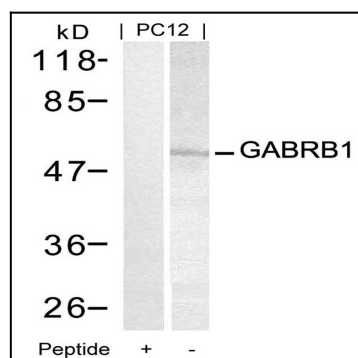


Figure 1: Western blot analysis of extracts from PC12 cells using GABRB1(Ab-434) Antibody 35-1543 and the same antibody preincubated with blocking peptide.