

35-1555: Polyclonal Antibody to Stathmin 1 (Ab-25)

Clonality :	Polyclonal
Application :	WB,IHC,IF
Reactivity :	Human,Mouse,Rat
Gene :	STMN1
Gene ID :	3925
Uniprot ID :	P16949
Format :	Purified
Alternative Name :	STMN1, STN1, stathmin
Isotype :	Rabbit IgG
Immunogen Information :	Peptide sequence around aa. 23~27 (I-L-S-P-R) derived from Human Stathmin 1.

Description

Involved in the regulation of the microtubule (MT) filament system by destabilizing microtubules. Prevents assembly and promotes disassembly of microtubules. Phosphorylation at Ser-16 may be required for axon formation during neurogenesis. Involved in the control of the learned and innate fear

Product Info

Amount :	50 µl / 100 µl
Content :	Supplied at 1.0mg/mL in phosphate buffered saline (without Mg2+ and Ca2+), pH 7.4, 150mM NaCl, 0.02% sodium azide and 50% glycerol.
Storage condition :	Store the antibody at 4°C, stable for 6 months. For long-term storage, store at -20°C. Avoid repeated freeze and thaw cycles.

Application Note

Predicted MW: 19kd, Western blotting: 1:500~1:1000, Immunohistochemistry: 1:50~1:100, Immunofluorescence: 1:100~1:200

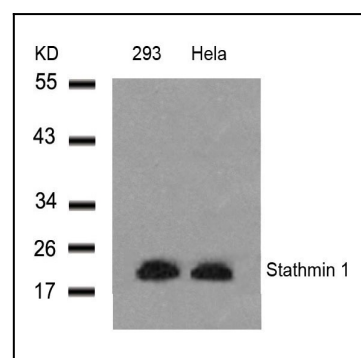


Figure 1: Western blot analysis of extracts from 293 and HeLa cells using Stathmin 1(Ab-25) Antibody 35-1555 .

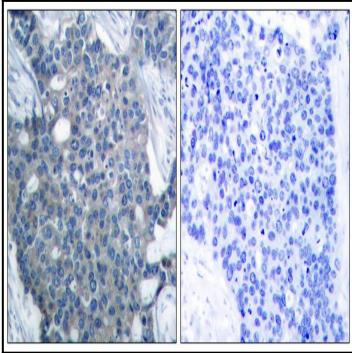


Figure 2: Immunohistochemical analysis of paraffin-embedded human breast carcinoma tissue using Stathmin 1(Ab-25) Antibody 35-1555 (left) or the same antibody preincubated with blocking peptide(right).

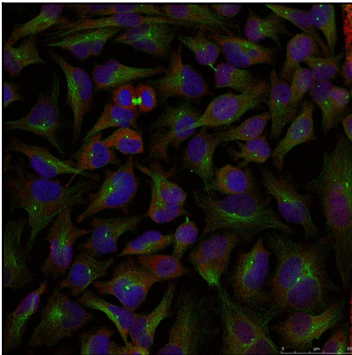


Figure 3: Immunofluorescence staining of methanol-fixed HeLa cells using Stathmin 1(Ab-25) Antibody 35-1555 .